

CONTENTS

| | |
|-------------------------------|--------------------|
| EXECUTIVE SUMMARY | Page ii |
| BOND CHARTS | Pages 1-6 |
| RENT CHARTS | Pages 7-8 |
| SAVINGS CHART | Page 9 |
| BOND ISSUE INFORMATION | Pages 10-11 |
| BONDED PROJECTS | Pages 12-27 |

COLOR COPIES NOT PRINTED
AT STATE EXPENSE

EXECUTIVE SUMMARY

Since its inception in 1979, the State Building Authority (SBA) has financed over 250 projects for state government and higher education institutions. SBA is a major source for higher education funding, having provided approximately \$2.15 billion to finance construction projects at state universities and over \$270 million for projects at community colleges. Over \$320 million in SBA financing has also been used to build the Michigan Public Safety Communications System, a state of the art communications system for law enforcement and emergency personnel.

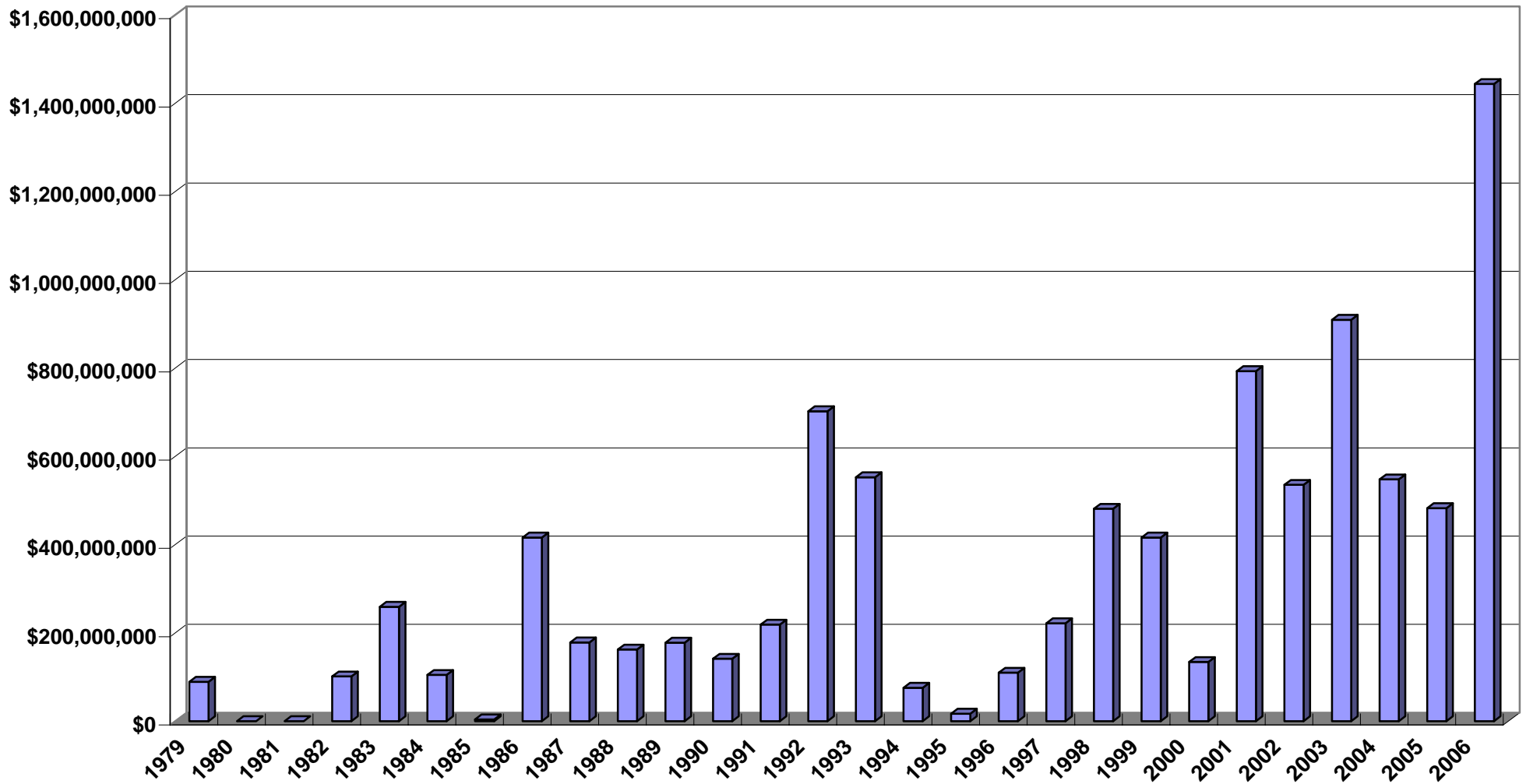
This report summarizes SBA activities from FY 1979 through FY 2007. It contains information on every SBA bond issue and project, as well as information on savings generated through SBA efforts.

Any questions or comments about this report or SBA related issues may be directed to SBA staff:

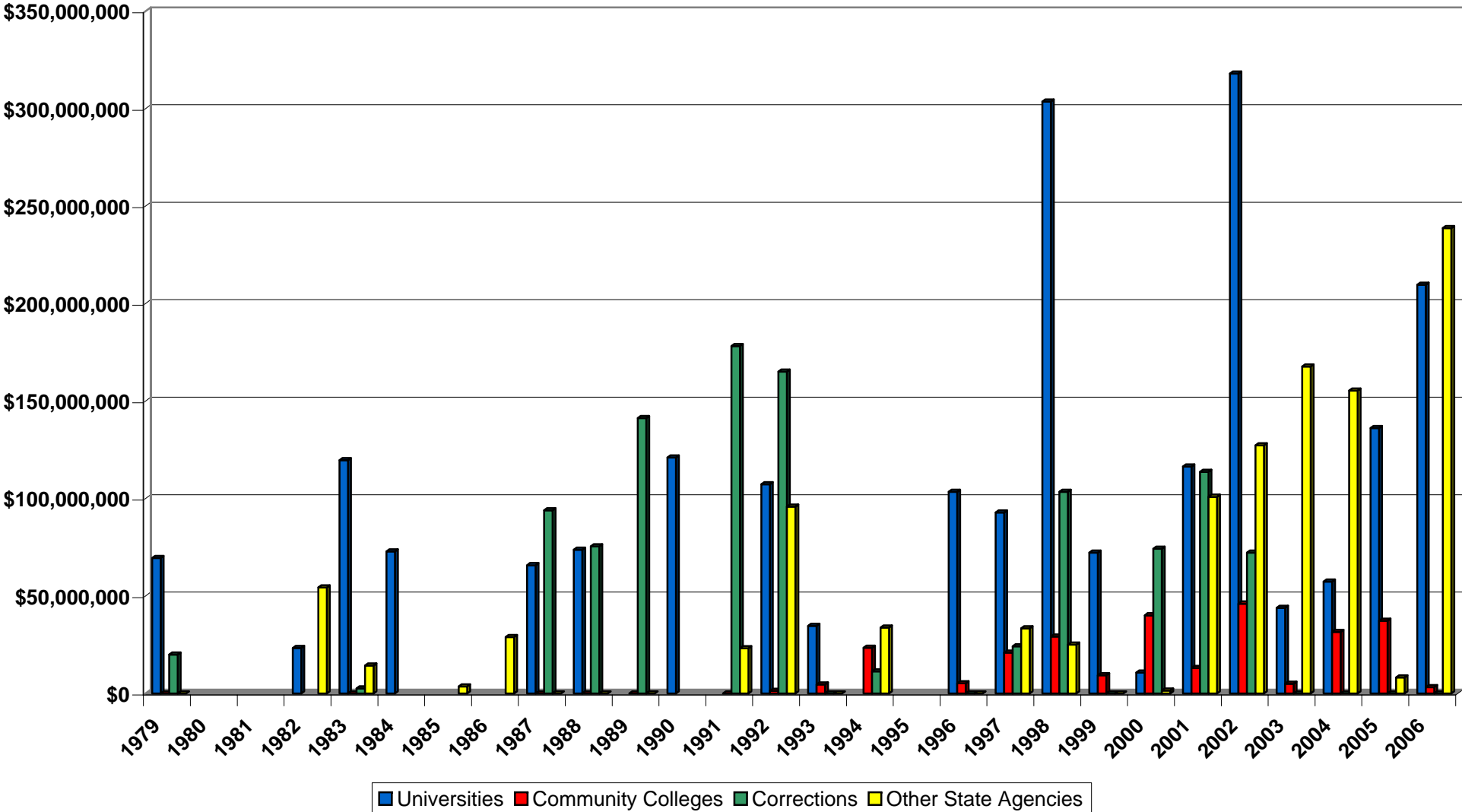
Deborah Roberts, Executive Director, (517) 373-3806
Carol Schulz, Chief Financial Officer, (517) 373-6847
TeAnn Smith, Analyst, (517) 241-1636

State Building Authority
Department of Management and Budget
1st Floor Lewis Cass Building
320 South Walnut Street
Lansing, MI 48933

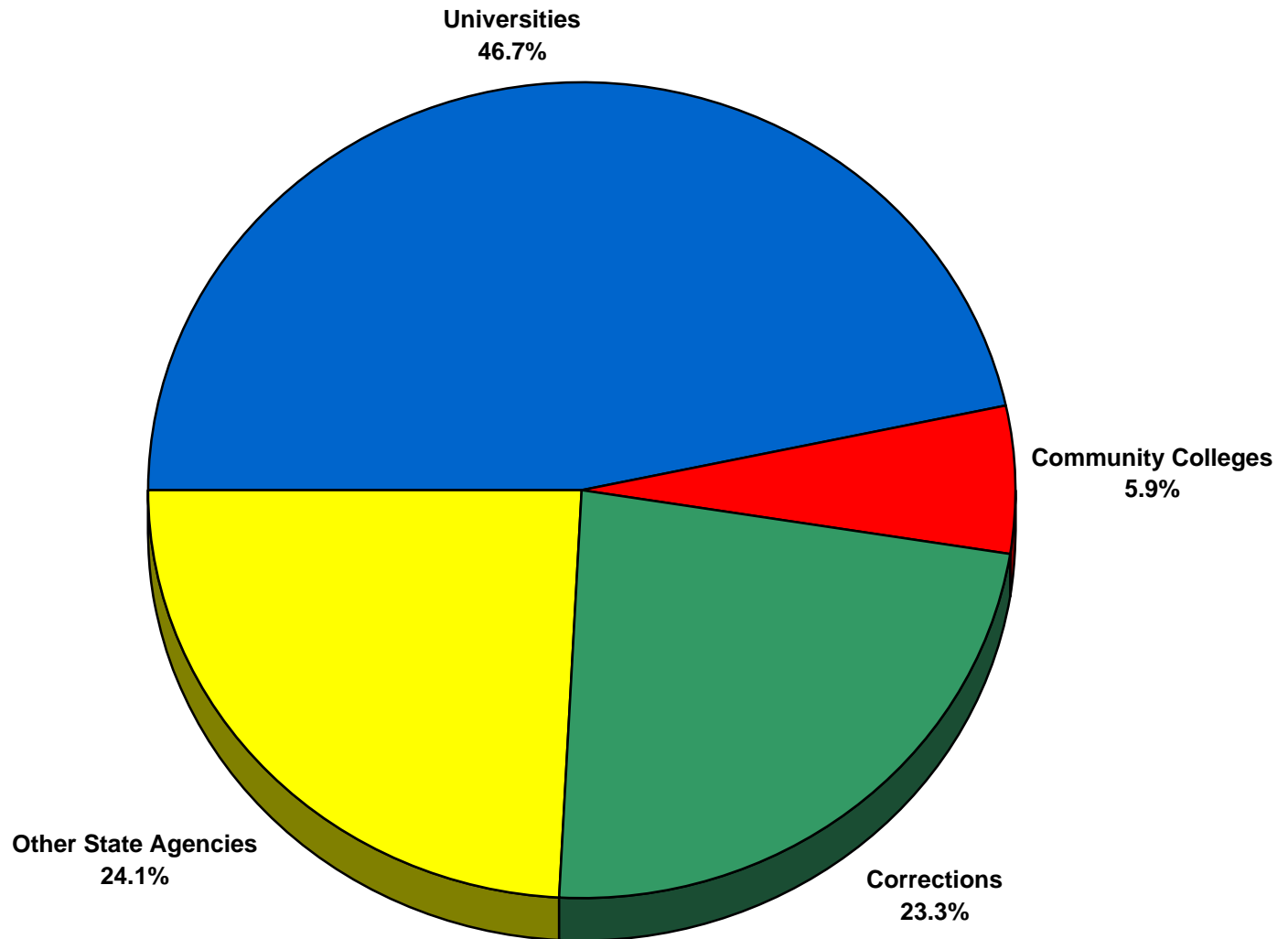
Bond Principal Issued
FY 1979- FY 2007
(Including Refundings)



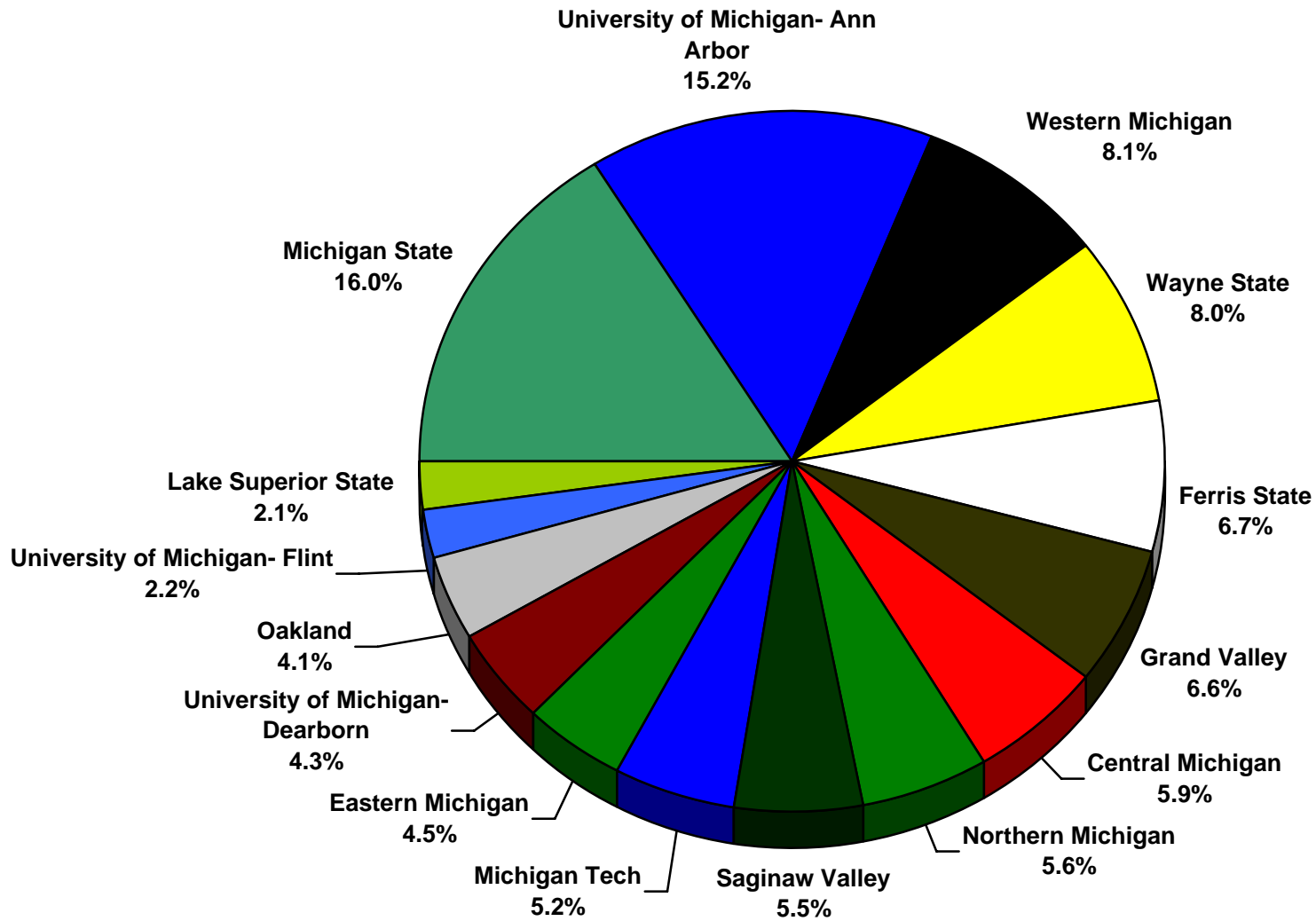
Bonds Per Year By Recipient FY 1979- FY 2007



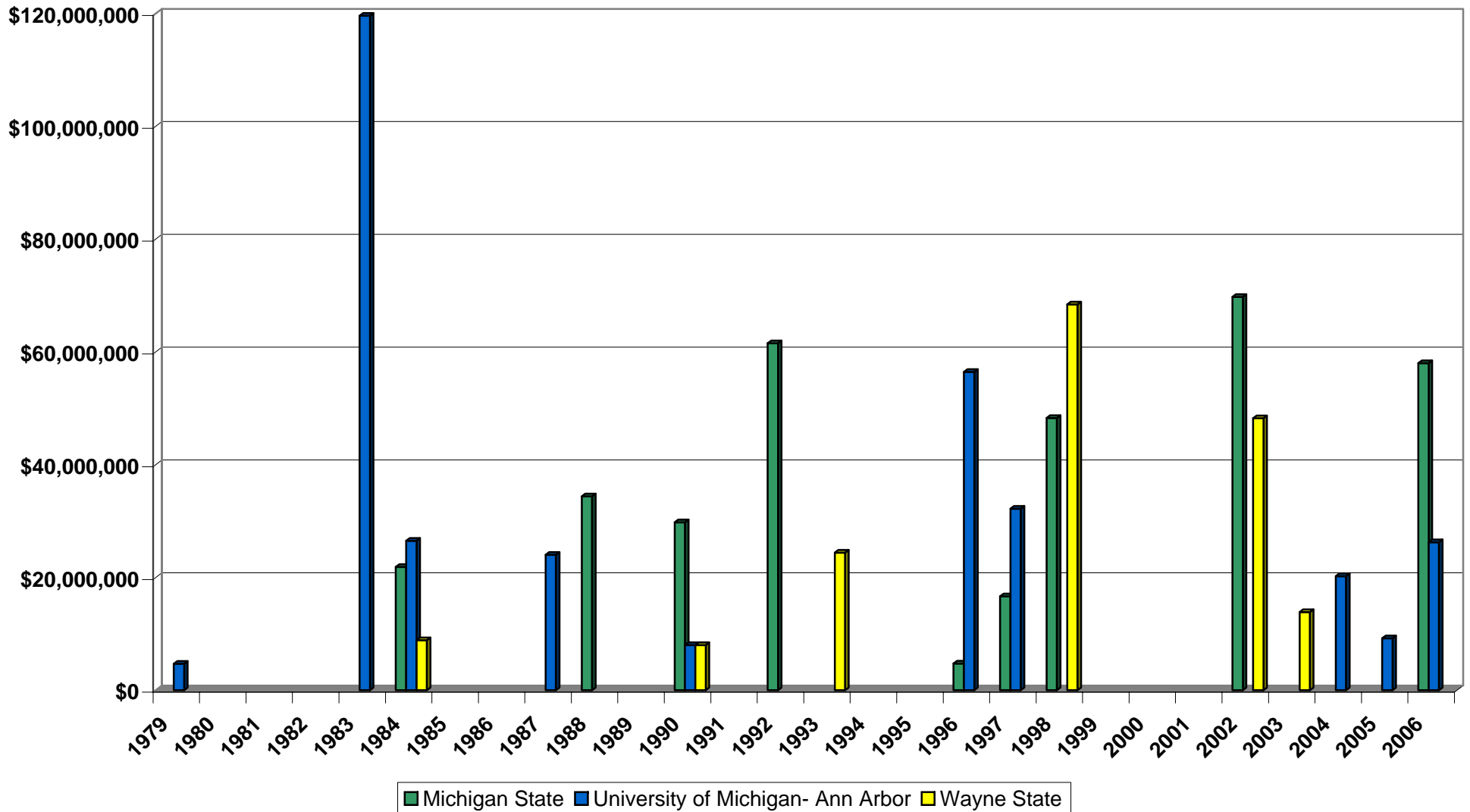
Total Bonds By Recipient FY 1979- FY 2007



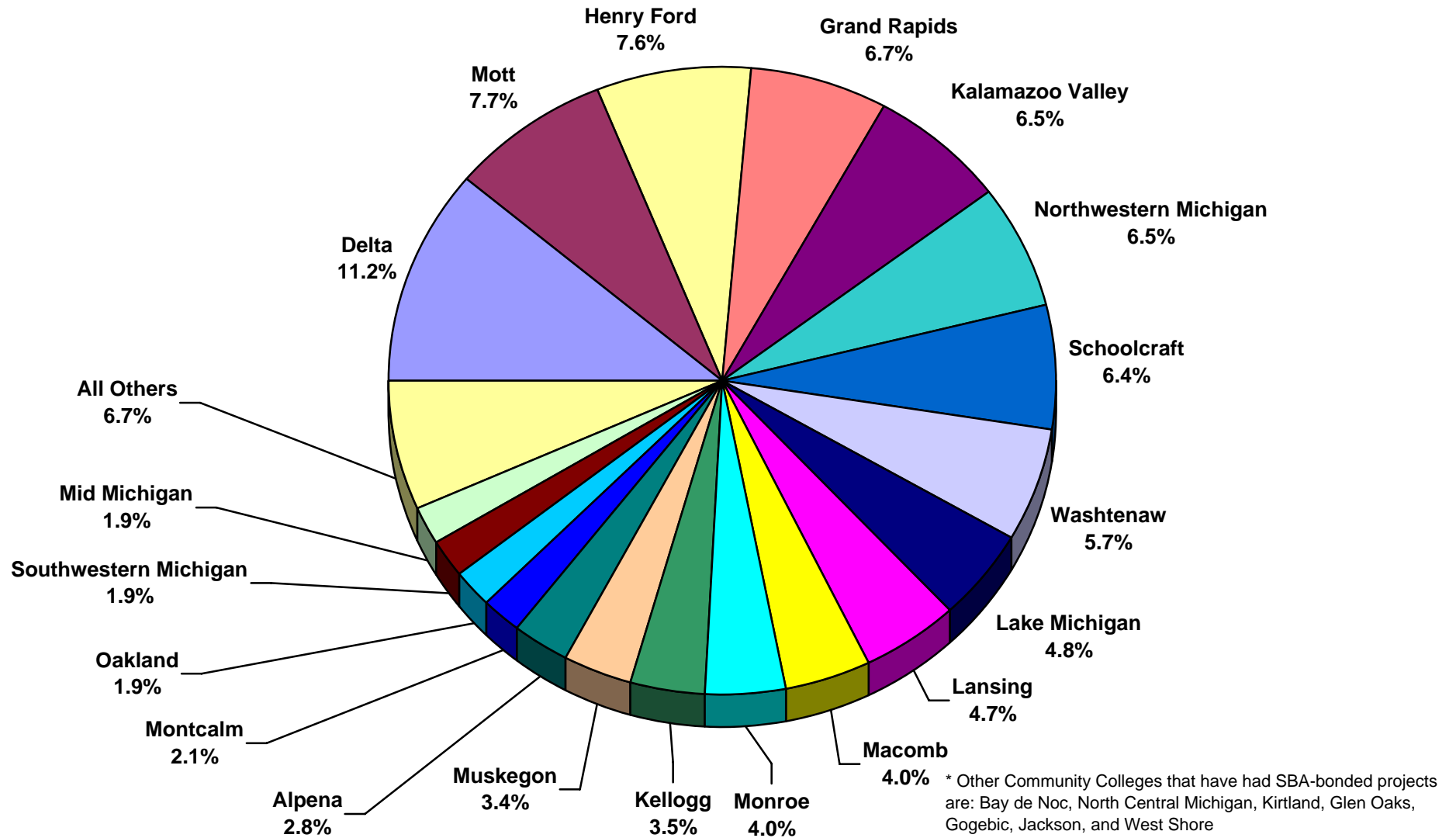
Percent of Bonds Received By University FY 1979- FY 2007



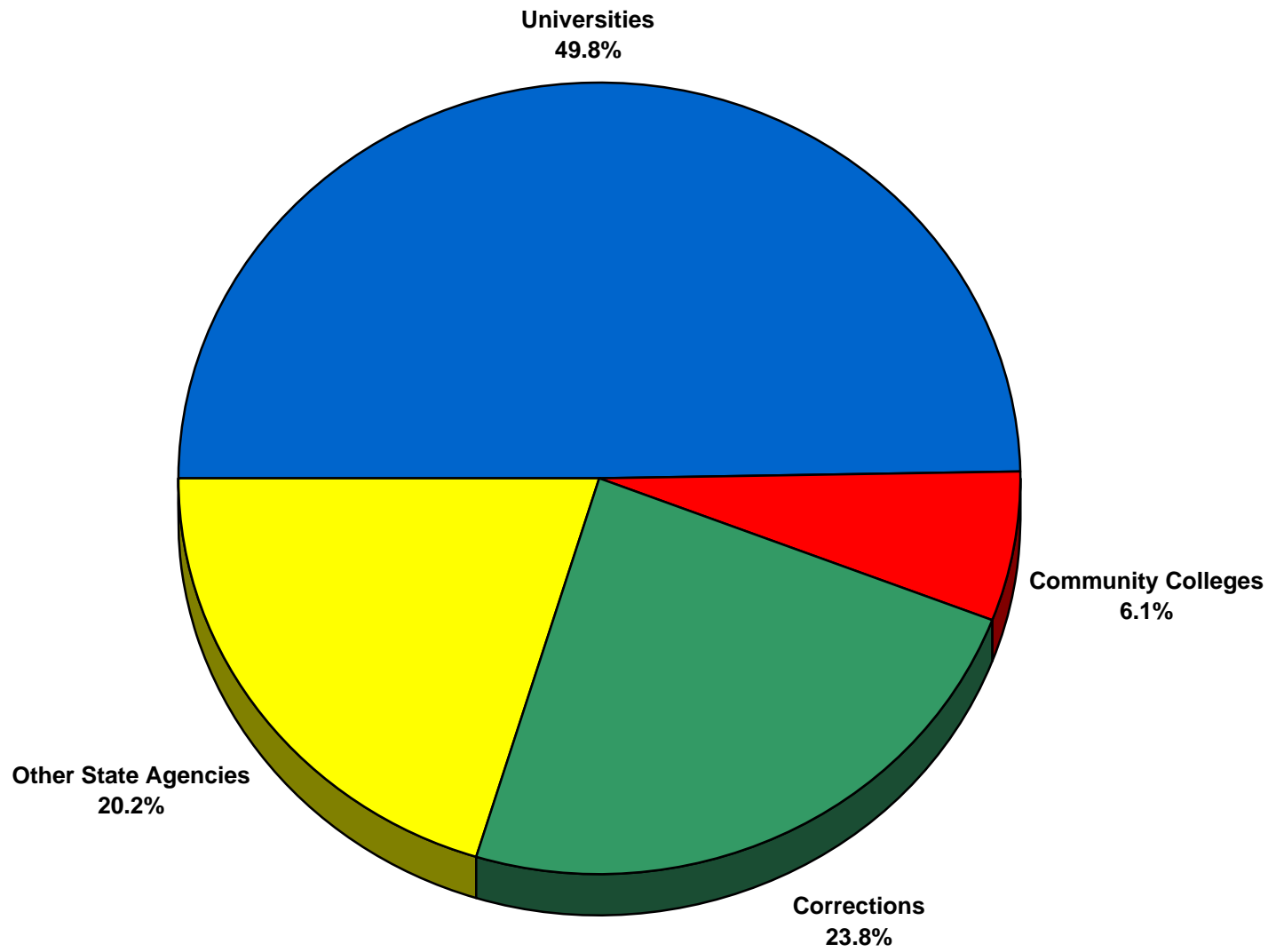
Selected University Bonds By Year FY 1979- FY 2007



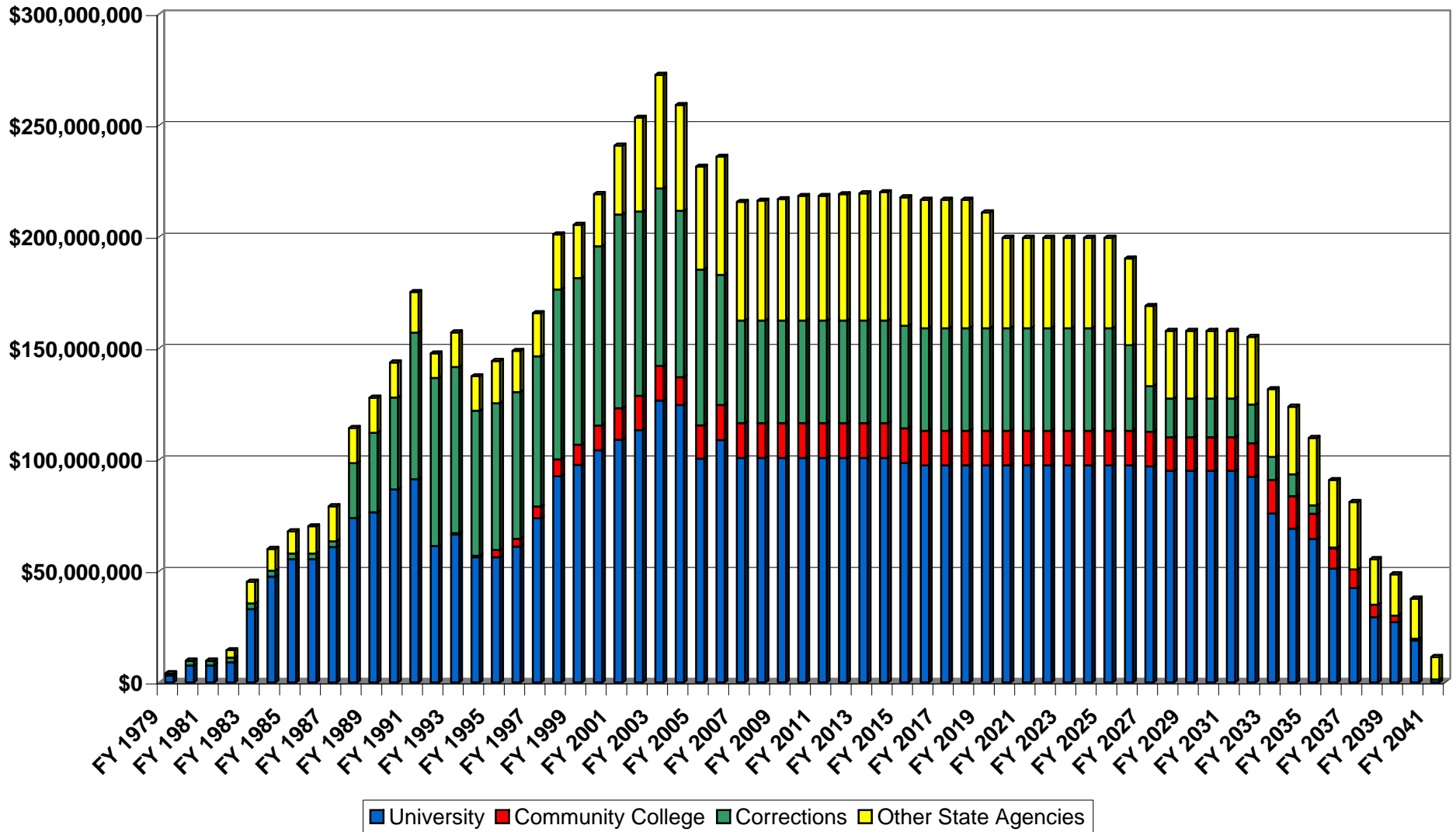
Bonds By Community College FY 1979- FY 2007



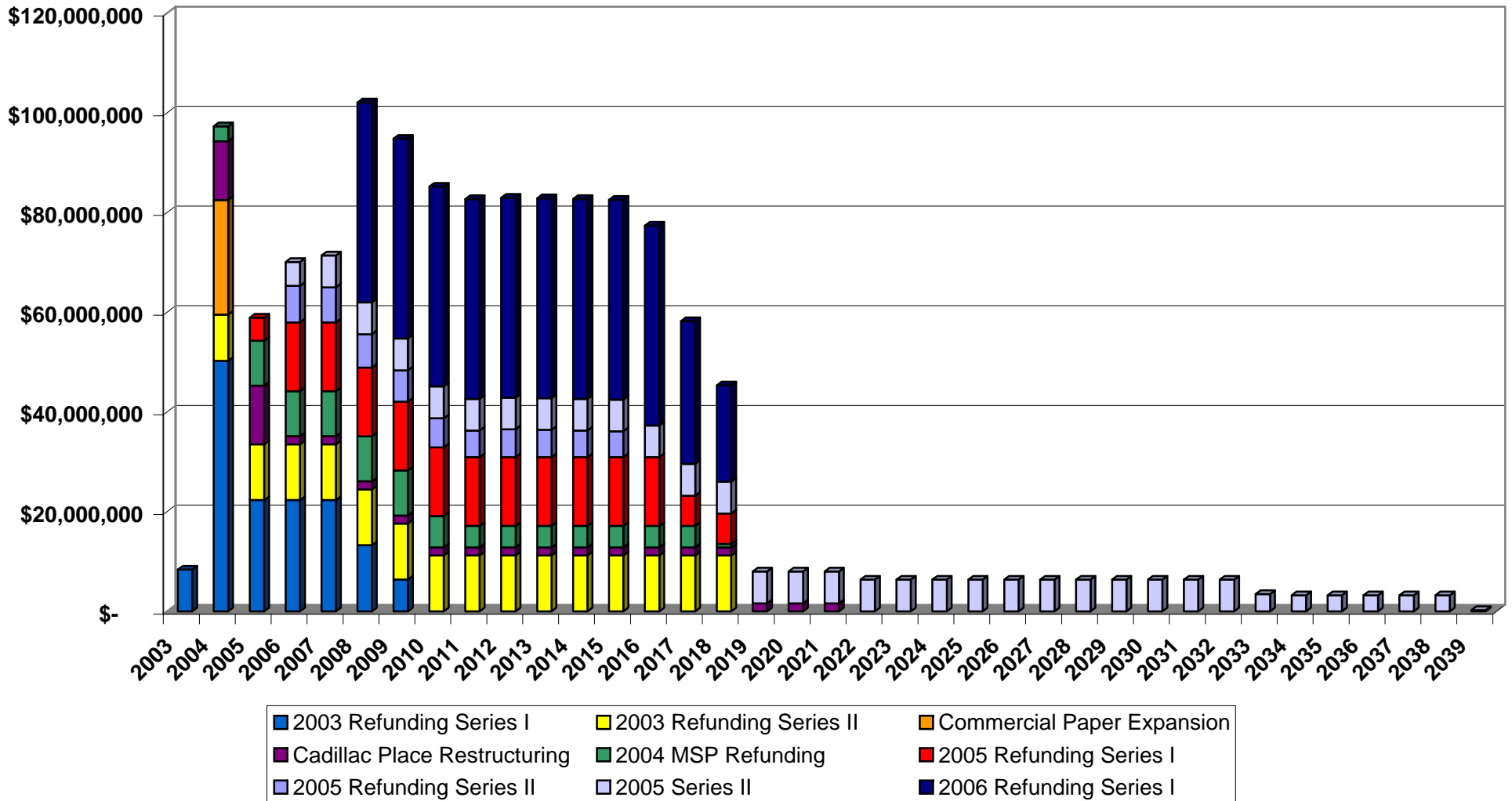
Total Rent By Recipient FY 1979- FY 2041



Rent Per Year By Recipient FY 1979- FY 2041



SBA Savings By Year FY 2003- FY 2039



SBA Bond Issues

| Bond Issue | Dated | Closing Date | First Maturity Date | Last Maturity Date | Bond Principal | Refunding Issue(s) |
|-----------------|-----------|--------------|---------------------|--------------------|----------------|----------------------|
| 1979 Series I | 4/1/1979 | 4/30/1979 | 4/1/1982 | 4/1/1999 | \$89,450,000 | |
| 1982 Series I | 4/1/1982 | 5/19/1982 | 4/1/1983 | 4/1/2002 | \$101,415,000 | Refunded by 1986 III |
| 1982 Series II | 10/1/1982 | 11/9/1982 | 10/1/1983 | 10/1/1995 | \$21,085,000 | |
| 1982 Series III | 12/1/1982 | 12/30/1982 | 12/1/1987 | 12/1/2012 | \$237,945,000 | Refunded by 1986 I |
| 1984 Series I | 2/15/1984 | 3/22/1984 | 3/1/1987 | 3/1/2001 | \$104,910,000 | Refunded by 1991 I |
| 1985 Series I | 5/1/1985 | 5/1/1985 | 7/1/1985 | 7/1/1992 | \$4,300,000 | |
| 1986 Series I | 5/1/1986 | 5/29/1986 | 12/1/1986 | 12/1/2004 | \$271,000,000 | Refunded by 1993 I |
| 1986 Series II | 8/1/1986 | 8/14/1986 | 4/1/1990 | 4/1/2001 | \$39,705,000 | Refunded by 1991 I |
| 1986 Series III | 8/1/1986 | 8/14/1986 | 4/1/1987 | 4/1/1999 | \$105,310,000 | Refunded by 1991 I |
| 1987 Series I | 3/1/1987 | 3/26/1987 | 3/1/1988 | 3/1/1998 | \$77,308,007 | Refunded by 1991 I |
| 1987 Series II | 9/1/1987 | 9/10/1987 | 9/1/1988 | 9/1/2001 | \$101,390,000 | Refunded by 1991 I |
| 1988 Series I | 6/1/1988 | 6/15/1988 | 4/1/1989 | 4/1/2004 | \$78,703,280 | Refunded by 1991 I |
| 1988 Series II | 9/1/1988 | 9/22/1988 | 10/1/1989 | 10/1/2002 | \$83,717,159 | Refunded by 1993 I |
| 1989 Series I | 5/15/1989 | 5/23/1989 | 10/1/1990 | 10/1/2008 | \$158,593,491 | Refunded by 1993 I |
| 1989 Series A | 7/6/1989 | 7/13/1989 | 7/1/1990 | 7/1/1994 | \$19,255,000 | |
| 1990 Series I | 1/1/1990 | 1/25/1990 | 10/1/1990 | 10/1/2006 | \$141,565,000 | Refunded by 1993 I |
| 1990 Series II | 1/15/1991 | 2/14/1991 | 10/1/1991 | 10/1/2009 | \$218,875,000 | Refunded by 1998 IR |
| 1991 Series I | 12/1/1991 | 12/27/1991 | 10/1/1992 | 10/1/2021 | \$296,045,000 | Refunded by 2001 IR |
| 1991 Series II | 12/1/1991 | 12/27/1991 | 10/1/1992 | 10/1/2021 | \$197,835,000 | Refunded by 2001 IR |
| 1992 Series I | 8/1/1992 | 8/26/1992 | 10/1/1995 | 10/1/2010 | \$208,550,000 | Refunded by 1998 IR |
| 1992 Series A | 10/1/1992 | 10/29/1992 | 10/1/1993 | 10/1/1996 | \$16,145,000 | |
| 1992 Series IIA | 10/1/1992 | 10/29/1992 | 10/1/1997 | 10/1/2012 | \$37,670,000 | |
| 1992 Series IIB | 10/1/1992 | 10/29/1992 | 10/1/1993 | 10/1/1997 | \$7,475,000 | |
| 1993 Series I | 8/1/1993 | 8/31/1993 | 10/1/1993 | 10/1/2016 | \$491,540,000 | Refunded by 2003 IR |
| 1994 Series A | 3/15/1994 | 4/7/1994 | 10/1/1994 | 10/1/1997 | \$6,850,000 | |
| 1994 Series I | 3/15/1994 | 4/7/1994 | 10/1/1995 | 10/1/2009 | \$39,795,000 | Refunded by 2002 III |
| 1994 Series II | 9/29/1994 | 9/29/1994 | 10/1/1995 | 10/1/2010 | \$29,088,682 | Refunded by 2002 III |
| 1995 Series A | 6/1/1995 | 6/8/1995 | 10/1/1995 | 10/1/2000 | \$17,200,000 | |
| 1996 Series I | 2/15/1996 | 3/14/1996 | 10/1/1996 | 10/1/2009 | \$109,905,000 | Refunded by 2003 IR |

SBA Bond Issues

| Bond Issue | Dated | Closing Date | First Maturity Date | Last Maturity Date | Bond Principal | Refunding Issue(s) |
|------------------|------------|--------------|---------------------|--------------------|----------------|----------------------------|
| 1997 Series I | 1/15/1997 | 2/6/1997 | 10/1/1997 | 10/1/2010 | \$144,790,000 | Refunded by 2003 IR |
| 1997 Series A | 5/15/1997 | 6/12/1997 | 10/1/1997 | 10/1/2005 | \$34,255,000 | Refunded by 2004 IR |
| 1997 Series B | 8/1/1997 | 8/13/1997 | 10/1/1997 | 10/1/2001 | \$42,865,000 | |
| 1997 Series II | 11/15/1997 | 12/3/1997 | 10/15/1998 | 10/15/2014 | \$371,920,225 | Refunded by 2003 IR |
| 1998 Series I | 7/30/1998 | 7/30/1998 | 10/15/1998 | 10/15/2014 | \$109,475,000 | Refunded by 2003 IR |
| 1998 Series IR | 11/15/1998 | 12/17/1998 | 10/15/1999 | 10/15/2021 | \$330,405,000 | |
| 1999 Series I | 5/18/1999 | 5/18/1999 | 10/15/1999 | 10/15/2016 | \$85,690,000 | Refunded by 2005 IR |
| 2000 VR Notes | 5/11/2000 | 5/11/2000 | Unknown | Variable | \$134,275,000 | Refunded by 2001 IR |
| 2000 MSP II | 10/1/2000 | 10/26/2000 | 10/1/2001 | 10/1/2011 | \$45,800,000 | Refunded by 2004 IR |
| 2000 Series I | 12/7/2000 | 12/7/2000 | 10/15/2001 | 10/15/2021 | \$147,855,000 | Refunded by 2005 IIR |
| 2001 Series I | 3/15/2001 | 3/15/2001 | 10/15/2001 | 10/15/2017 | \$121,680,000 | Refunded by 2005 IR |
| 2001 MSP III | 5/1/2001 | 5/17/2001 | 10/1/2001 | 10/1/2012 | \$58,215,000 | Refunded by 2004 IR |
| 2001 Series IR | 7/12/2001 | 7/12/2001 | 10/15/2002 | 10/15/2024 | \$419,730,000 | |
| 2001 Series II | 11/8/2001 | 11/8/2001 | 10/15/2002 | 10/15/2018 | \$170,095,000 | Refunded by 2005 IR |
| 2002 Series I | 4/17/2002 | 4/17/2002 | Variable | Variable | \$215,210,000 | Refunded by 2003 IIR |
| 2002 Series II | 9/12/2002 | 9/12/2002 | Variable | Variable | \$150,250,000 | Refunded by 2003 IIR |
| 2002 MSP IV | 12/1/2002 | 12/19/2002 | 10/1/2003 | 10/1/2013 | \$34,900,000 | Refunded by 2004 IR |
| 2002 Series IIIR | 12/5/2002 | 12/5/2002 | 10/15/2003 | 10/15/2026 | \$215,205,000 | Refunded by 2006 IR |
| 2003 Series IR | 7/30/2003 | 7/30/2003 | 10/15/03 | 10/15/2017 | \$659,420,000 | |
| 2003 Series II | 12/1/2003 | 12/1/2003 | 10/15/04 | 10/15/2024 | \$392,590,000 | Partially refunded by 2006 |
| 2004 MSP V | 5/27/2004 | 5/27/2004 | 10/1/04 | 10/1/2018 | \$155,350,000 | |
| 2005 Series I | 1/27/2005 | 1/27/2005 | Variable | Variable | \$189,300,000 | Refunded by 2006 IR |
| 2005 Series IR | 5/26/2005 | 5/26/2005 | 10/15/05 | 10/15/2033 | \$293,395,000 | |
| 2005 Series IIR | 10/26/2005 | 10/26/2005 | 10/15/06 | 10/15/2035 | \$242,805,000 | |
| 2005 Series IIA | 12/21/2005 | 12/21/2005 | Variable | Variable | \$343,600,000 | Partially refunded by 2006 |
| 2005 Series IIB | 1/19/2006 | 1/19/2006 | Variable | Variable | \$9,900,000 | |
| 2006 Series IRB | 9/6/2006 | 9/6/2006 | 10/15/08 | 10/15/2013 | \$13,735,000 | |
| 2006 Series IRA | 9/6/2006 | 9/6/2006 | 10/15/13 | 10/15/2036 | \$833,631,158 | |

SBA Bonded Projects

Universities

| Central Michigan | Bond Issue | Refunding Issue(s) | Lease End Date | Rental Payment | SBA Project Cost |
|--|-----------------|-------------------------------|----------------|----------------|----------------------|
| Science Building (Phase II) | 1992 Series I | 1998 Series I | 8/1/2027 | \$2,454,140 | \$23,000,000 |
| Music Building | 1997 Series II | 2003 Series IR/2006 Series IR | 8/6/2006 | \$2,053,000 | \$20,785,000 |
| Industrial Education and Technology Building | 1988 Series I | 1991 Series I | 12/27/1991 | \$1,260,000 | \$9,500,000 |
| Park Library Addition and Remodeling | 2002 Series I | 2003 Series II/2006 Series IR | 3/31/2037 | \$3,320,000 | \$37,499,900 |
| Health Professions Building | 2005 Series IIA | 2006 Series IR | 10/31/2040 | \$2,813,000 | \$36,585,800 |
| Central Michigan Total | | | | | \$127,370,700 |
| Eastern Michigan | Bond Issue | Refunding Issue(s) | Lease End Date | Rental Payment | SBA Project Cost |
| Music Building (EMU) | 1979 Series I | | 10/1/1991 | \$879,356 | \$7,930,000 |
| Library Replacement | 1998 Series I | 2003 Series IR/2006 Series IR | 8/6/2006 | \$4,045,000 | \$40,641,600 |
| College of Education | 2000 VR Notes | 2001 Series I | 12/1/2034 | \$1,028,000 | \$10,737,720 |
| Physical Plant | 1996 Series I | 2003 Series IR | 7/30/2003 | \$289,000 | \$2,772,000 |
| Health and Human Services | 2000 Series I | 2005 Series IIR | 11/30/2035 | \$1,340,000 | \$15,312,600 |
| College of Business Building | 1990 Series I | 1993 Series I | 8/31/1993 | \$2,400,000 | \$19,500,000 |
| Eastern Michigan Total | | | | | \$96,893,920 |
| Ferris State | Bond Issue | Refunding Issue(s) | Lease End Date | Rental Payment | SBA Project Cost |
| Library Addition and Renovation (Phase II) | 2002 Series II | 2003 Series II | 12/1/2003 | \$700,000 | \$7,875,000 |
| Library Addition and Renovation (Phase I) | 2001 Series II | 2005 Series I | 10/31/2036 | \$2,625,000 | \$29,624,900 |
| Occupational Education Building | 1990 Series I | 1993 Series I | 8/31/1993 | \$800,000 | \$7,000,000 |
| Heavy Equip Tech Building | 1987 Series I | 1991 Series I/2001 Series I | 7/12/2001 | \$825,000 | \$5,700,000 |
| Elastomer Institute | 1999 Series I | 2005 Series I | 5/26/2005 | \$423,000 | \$4,649,900 |
| School of Technology Buildings | 1988 Series I | 1991 Series I/2001 Series I | 7/12/2001 | \$660,000 | \$5,100,000 |
| Engineering and Technology Center | 2005 Series I | 2006 Series IR | 12/31/2039 | \$1,070,000 | \$13,499,800 |
| Arts and Sciences Complex | 1997 Series II | 2003 Series IR/2006 Series IR | 8/6/2006 | \$2,956,000 | \$30,690,000 |
| Ferris State Total | | | | | \$104,139,600 |

SBA Bonded Projects

| Grand Valley | Bond Issue | Refunding Issue(s) | Lease End Date | Rental Payment | SBA Project Cost |
|--|-----------------|-------------------------------|----------------|----------------|----------------------|
| Grand Rapids Center | 1987 Series I | 1991 Series I | 12/27/1991 | \$2,290,000 | \$16,100,000 |
| School of Business and Graduate Library | 2000 Series I | 2005 Series IIR | 11/30/2035 | \$3,320,000 | \$37,524,900 |
| Physical Education Facility | 1982 Series I | 1986 Series III/1991 Series I | 12/27/1991 | \$2,024,000 | \$10,780,000 |
| Life Sciences Building | 1996 Series I | 2003 Series IR/2006 Series IR | 8/6/2006 | \$4,402,000 | \$39,501,000 |
| Health Professions | 2003 Series II | 2005 Series IIB Multi-Modal | 12/21/2005 | \$3,210,000 | \$37,099,800 |
| Grand Valley Total | | | | | \$141,005,700 |
| Lake Superior State | Bond Issue | Refunding Issue(s) | Lease End Date | Rental Payment | SBA Project Cost |
| Library Addition | 1997 Series I | 2003 Series IR | 7/30/2003 | \$1,204,000 | \$10,810,000 |
| Crawford Hall Addition | 2000 Series I | 2005 Series IIR | 10/26/2005 | \$1,530,000 | \$17,249,900 |
| Arts Classroom Building | 2005 Series I | 2006 Series IR | 12/31/2039 | \$910,000 | \$11,474,800 |
| Vocational Technology Building | 1979 Series I | | 10/1/1991 | \$638,957 | \$5,540,000 |
| Lake Superior State Total | | | | | \$45,074,700 |
| Michigan State | Bond Issue | Refunding Issue(s) | Lease End Date | Rental Payment | SBA Project Cost |
| Crop and Soil Sciences Research Facility | 1997 Series II | 2003 Series IR | 7/30/2003 | \$280,000 | \$3,069,000 |
| Bio-Physical Sciences Building | 2002 Series I | 2003 Series II/2006 Series IR | 3/31/2037 | \$6,180,000 | \$69,749,900 |
| Agriculture and Livestock Education Center | 1997 Series I | 2003 Series IR/2006 Series IR | 8/6/2006 | \$1,840,000 | \$16,673,000 |
| Engineering Building | 1988 Series I | 1991 Series I/2001 Series I | 7/12/2001 | \$4,960,000 | \$34,400,000 |
| Anthony Hall, Dairy Plant, and Meats Lab | 1997 Series II | 2003 Series IR/2006 Series IR | 10/31/2032 | \$3,920,000 | \$39,976,900 |
| Animal Health Diagnostic Lab | 2005 Series IIA | 2006 Series IR | 10/31/2040 | \$4,459,000 | \$57,999,900 |
| Infectious Disease Containment Facility | 1996 Series I | 2003 Series IR | 7/30/2003 | \$363,000 | \$3,521,000 |
| Veterinary Clinical Center | 1990 Series I | 1993 Series I | 8/31/1993 | \$3,700,000 | \$29,800,000 |
| Equine Teaching and Research Center | 1996 Series I | 2003 Series IR | 7/30/2003 | \$128,000 | \$1,233,000 |
| Power Plant Addition | 1992 Series I | 1998 Series I | 12/17/1998 | \$6,836,229 | \$61,544,000 |
| Farm Buildings | 1998 Series I | 2003 Series IR | 7/30/2003 | \$473,000 | \$5,247,000 |
| Plant and Soil Sciences | 1984 Series I | 1991 Series I | 12/27/1991 | \$4,372,788 | \$21,871,650 |
| Michigan State Total | | | | | \$345,085,350 |

SBA Bonded Projects

| Michigan Tech | Bond Issue | Refunding Issue(s) | Lease End Date | Rental Payment | SBA Project Cost |
|--|------------------|-------------------------------|----------------|----------------|----------------------|
| Environmental Sciences | 1999 Series I | 2005 Series I | 4/30/2034 | \$2,915,000 | \$29,999,900 |
| Minerals and Materials Engineering Building | 1990 Series I | 1993 Series I | 1/1/2015 | \$3,400,000 | \$27,000,000 |
| Performing Arts Center | 2001 Series I | 2005 Series I | 2/28/2036 | \$461,000 | \$4,999,900 |
| Center of Integrated Learning and Information Technology | 2005 Series IIA | 2006 Series IR | 10/31/2040 | \$1,922,000 | \$24,999,800 |
| Student Development Complex | 1979 Series I | | 10/1/1991 | \$1,916,197 | \$17,860,000 |
| Ecosystem Science Project | 2001 Series I | 2005 Series I | 5/26/2005 | \$692,000 | \$7,499,900 |
| Michigan Tech Total | | | | | \$112,359,500 |
| Northern Michigan | Bond Issue | Refunding Issue(s) | Lease End Date | Rental Payment | SBA Project Cost |
| Vocational Skills Center | 1979 Series I | | 10/1/1991 | \$1,760,530 | \$16,560,000 |
| Heating Plant Addition | 1997 Series I | 2003 Series IR/2006 Series IR | 1/31/2032 | \$2,123,000 | \$19,334,700 |
| Great Lakes Training Complex | 1992 Series I | 1998 Series I | 12/17/1998 | \$2,140,694 | \$20,800,000 |
| Fine and Practical Arts Project | 2005 Series IIA | 2006 Series IR | 10/31/2040 | \$1,224,000 | \$15,922,300 |
| Student Services Building | 2005 Series IIA | 2006 Series IR | 10/31/2040 | \$908,000 | \$11,812,300 |
| Seaborg Science Building Renovations (Phase II) | 2001 Series II | 2005 Series I | 10/31/2036 | \$1,290,000 | \$14,555,921 |
| Seaborg Science Building Renovations (Phase I) | 2001 Series I | 2005 Series I | 2/28/2036 | \$1,905,000 | \$20,645,179 |
| Northern Michigan Total | | | | | \$119,630,400 |
| Oakland | Bond Issue | Refunding Issue(s) | Lease End Date | Rental Payment | SBA Project Cost |
| School of Education and Human Services Building | 2002 Series IIIR | 2006 Series IR | 11/30/2037 | \$2,095,000 | \$23,624,800 |
| Kresge Library Addition | 1988 Series I | 1991 Series I/2001 Series I | 7/12/2001 | \$620,000 | \$4,700,000 |
| Classroom/Business School Office Building | 2001 Series I | 2005 Series I | 2/28/2036 | \$1,211,000 | \$13,124,900 |
| Science and Technology Building | 1997 Series II | 2003 Series IR/2006 Series IR | 10/31/2032 | \$3,820,000 | \$38,621,800 |
| Classroom Office Building | 1979 Series I | | 10/1/1991 | \$931,668 | \$8,685,000 |
| Oakland Total | | | | | \$88,756,500 |
| Saginaw Valley | Bond Issue | Refunding Issue(s) | Lease End Date | Rental Payment | SBA Project Cost |
| Classroom Facility | 2001 Series II | 2005 Series I | 10/31/2036 | \$1,662,000 | \$18,749,900 |

SBA Bonded Projects

| Saginaw Valley | Bond Issue | Refunding Issue(s) | Lease End Date | Rental Payment | SBA Project Cost |
|--|-------------------|------------------------------|-----------------------|-----------------------|-------------------------|
| Instructional Facility (Phase IV) and Library Renovation | 2005 Series I | 2006 Series IR | 12/31/2039 | \$2,375,000 | \$29,999,800 |
| Wickes Hall | 1988 Series I | 1991 Series I/2001 Series I | 7/12/2001 | \$510,000 | \$4,072,200 |
| Physical Education Building | 1988 Series I | 1991 Series I/2001 Series I | 7/12/2001 | \$2,160,000 | \$15,900,000 |
| Instructional Facility (Phase II) | 1984 Series I | 1991 Series I | 12/27/1991 | \$3,781,584 | \$15,600,000 |
| Business and Professional Development Center | 1997 Series II | 1998 Series I/2003 Series IR | 10/31/2032 | \$3,153,000 | \$33,499,000 |
| Saginaw Valley Total | | | | | \$117,820,900 |

| University of Michigan- Ann Arbor | Bond Issue | Refunding Issue(s) | Lease End Date | Rental Payment | SBA Project Cost |
|--|-------------------|-------------------------------|-----------------------|-----------------------|-------------------------|
| Engineering Center Building | 1996 Series I | 2003 Series IR | 7/30/2003 | \$1,790,000 | \$16,335,000 |
| Natural Science Building | 1990 Series I | 1993 Series I | 8/31/1993 | \$900,000 | \$8,000,000 |
| Adult General Hospital | 1982 Series III | 1986 Series I/1993 Series I | 10/1/2004 | \$27,917,000 | \$119,590,000 |
| Natural Resources | 2003 Series II | 2006 Series IR | 10/31/2038 | \$975,000 | \$11,249,900 |
| Perry Building | 2003 Series II | 2006 Series IR | 10/31/2038 | \$780,000 | \$8,999,900 |
| Integrated Technology Center | 1996 Series I | 2003 Series I/2006 Series IR | 8/6/2006 | \$4,402,000 | \$40,095,000 |
| West Hall | 2005 Series I | 2006 Series IR | 12/31/2039 | \$730,000 | \$9,230,769 |
| Medical Campus Library | 1979 Series I | | 10/1/1991 | \$521,224 | \$4,700,000 |
| Clarence Cook Little Science Building Renovation | 1997 Series I | 2003 Series IR/2006 Series IR | 1/31/2032 | \$1,919,000 | \$16,335,000 |
| Angell Hall Renovation | 1997 Series I | 2003 Series IR | 7/30/2003 | \$1,880,000 | \$15,840,000 |
| Chemistry Building | 1987 Series I | 1991 Series I | 12/27/1991 | \$4,285,000 | \$24,000,000 |
| Mason Hall and Haven Hall | 2005 Series IIA | 2006 Series IR | 10/31/2040 | \$2,018,000 | \$26,250,000 |
| Engineering Building (Phase I) | 1984 Series I | 1991 Series I | 12/27/1991 | \$5,591,340 | \$26,510,000 |
| University of Michigan- Ann Arbor Total | | | | | \$327,135,569 |

| University of Michigan- Dearborn | Bond Issue | Refunding Issue(s) | Lease End Date | Rental Payment | SBA Project Cost |
|---|-------------------|---------------------------|-----------------------|-----------------------|-------------------------|
| Campus Renovations (Phase I) | 1992 Series IIA | 1998 Series I | 12/17/1998 | \$1,051,822 | \$10,220,000 |
| EIC Building (Phase III) | 2001 Series II | 2005 Series I | 10/31/2036 | \$270,000 | \$3,046,500 |
| Hubbard Drive | 2005 Series I | 2006 Series IR | 12/31/2039 | \$1,950,000 | \$24,599,800 |
| University Mall | 2005 Series I | 2006 Series IR | 12/31/2039 | \$775,000 | \$9,778,500 |
| Library Project | 1979 Series I | | 10/1/1991 | \$909,540 | \$8,250,000 |

SBA Bonded Projects

| University of Michigan- Dearborn | Bond Issue | Refunding Issue(s) | Lease End Date | Rental Payment | SBA Project Cost |
|---|-------------------|-------------------------------|----------------|----------------|----------------------|
| CASL Building (Phase III) | 2001 Series II | 2005 Series I | 10/31/2036 | \$1,981,000 | \$22,349,900 |
| Campus Renovations (Phase II) | 1997 Series I | 2003 Series IR | 7/30/2003 | \$1,514,000 | \$13,860,000 |
| University of Michigan- Dearborn Total | | | | | \$92,104,700 |
| University of Michigan- Flint | Bond Issue | Refunding Issue(s) | Lease End Date | Rental Payment | SBA Project Cost |
| Water Street Condo Facility | 1992 Series I | 1998 Series I | 12/17/1998 | \$195,441 | \$1,899,000 |
| Classroom/Lab Building | 1987 Series I | 1991 Series I | 12/27/1991 | \$3,515,000 | \$20,000,000 |
| Professional Studies and Classroom Building | 2002 Series I | 2003 Series II/2006 Series IR | 3/31/2037 | \$2,300,000 | \$25,942,100 |
| University of Michigan- Flint Total | | | | | \$47,841,100 |
| Wayne State | Bond Issue | Refunding Issue(s) | Lease End Date | Rental Payment | SBA Project Cost |
| Engineering Building (WSU) | 1984 Series I | 1991 Series I | 12/27/1991 | \$1,630,092 | \$8,887,000 |
| Welcome Center | 2002 Series IIIIR | 2006 Series IR | 11/30/2037 | \$1,230,000 | \$13,874,800 |
| Pharmacy Building Replacement | 2002 Series II | 2003 Series II/2006 Series IR | 8/31/2037 | \$4,270,000 | \$48,224,900 |
| Undergraduate Library | 1998 Series I | 2003 Series IR/2006 Series IR | 1/31/2033 | \$2,273,000 | \$25,999,900 |
| Science Hall | 1992 Series IIB | | 10/1/1997 | \$668,967 | \$6,500,000 |
| Faculty and Administration Building | 1990 Series I | 1993 Series I | 8/31/1993 | \$900,000 | \$8,000,000 |
| Biological Sciences Building | 1992 Series IIA | 1998 Series I | 12/17/1998 | \$1,842,232 | \$17,900,000 |
| Old Main Building Renovation | 1997 Series II | 2003 Series IR/2006 Series IR | 10/31/2032 | \$4,040,000 | \$42,426,600 |
| Wayne State Total | | | | | \$171,813,200 |
| Western Michigan | Bond Issue | Refunding Issue(s) | Lease End Date | Rental Payment | SBA Project Cost |
| Lake Michigan College SW Center | 2002 Series IIIIR | 2006 Series IR | 11/30/2037 | \$565,000 | \$6,364,300 |
| Waldo Library | 1990 Series I | 1993 Series I | 8/31/1993 | \$1,500,000 | \$12,000,000 |
| Haenicke Hall (Science Facility) | 1999 Series I | 2005 Series I | 4/30/2034 | \$3,540,000 | \$37,620,000 |
| Power Plant Renovation | 1998 Series I | 2003 Series IR/2006 Series IR | 9/30/2032 | \$1,982,000 | \$22,667,000 |
| Fine Arts Building | 1982 Series I | 1986 Series III/1991 Series I | 12/27/1991 | \$2,367,000 | \$12,491,427 |
| College of Business | 1990 Series I | 1993 Series I | 8/31/1993 | \$1,200,000 | \$9,700,000 |

SBA Bonded Projects

| Western Michigan | Bond Issue | Refunding Issue(s) | Lease End Date | Rental Payment | SBA Project Cost |
|------------------------------------|-----------------|--------------------|----------------|----------------|------------------------|
| Engineering and Applied Sciences | 2005 Series I | 2006 Series IR | 12/31/2039 | \$2,970,000 | \$37,499,900 |
| Health and Human Services Building | 2005 Series IIA | 2006 Series IR | 10/31/2040 | \$2,777,000 | \$36,127,900 |
| Western Michigan Total | | | | | \$174,470,527 |
| Universities Total | | | | | \$2,111,502,366 |

SBA Bonded Projects

Community Colleges

| Alpena | Bond Issue | Refunding Issue(s) | Lease End Date | Rental Payment | SBA Project Cost |
|---|----------------|-------------------------------|----------------|----------------|---------------------|
| Student Business Learning Resource Center | 1997 Series I | 2003 Series IR | 7/30/2003 | \$461,000 | \$4,099,000 |
| Concrete Technology Center | 2000 Series I | 2005 Series IIR | 11/30/2035 | \$300,000 | \$3,359,900 |
| Alpena Total | | | | | \$7,458,900 |
| Bay de Noc | Bond Issue | Refunding Issue(s) | Lease End Date | Rental Payment | SBA Project Cost |
| General Campus Renovations (Bay de Noc) | 2000 VR Notes | 2001 Series I | 12/1/2034 | \$162,000 | \$1,857,400 |
| Business Technology Center | 1997 Series II | 2003 Series IR | 7/30/2003 | \$219,000 | \$2,499,900 |
| Bay de Noc Total | | | | | \$4,357,300 |
| Delta | Bond Issue | Refunding Issue(s) | Lease End Date | Rental Payment | SBA Project Cost |
| Science and Learning | 2000 VR Notes | 2001 Series I | 12/1/2034 | \$1,200,000 | \$12,499,900 |
| General Campus Renovations (Delta) | 2005 Series I | 2006 Series IR | 12/31/2039 | \$1,410,000 | \$17,819,800 |
| Delta Total | | | | | \$30,319,700 |
| Glen Oaks | Bond Issue | Refunding Issue(s) | Lease End Date | Rental Payment | SBA Project Cost |
| Business Development Center | 1994 Series I | 2002 Series IIIR | 12/5/2002 | \$235,000 | \$2,300,500 |
| Glen Oaks Total | | | | | \$2,300,500 |
| Gogebic | Bond Issue | Refunding Issue(s) | Lease End Date | Rental Payment | SBA Project Cost |
| Center for Business Education | 1992 Series I | 1998 Series I | 12/17/1998 | \$138,939 | \$1,350,000 |
| General Campus Renovations (Gogebic) | 2002 Series II | 2003 Series II/2006 Series IR | 8/31/2037 | \$60,000 | \$699,800 |
| Gogebic Total | | | | | \$2,049,800 |
| Grand Rapids | Bond Issue | Refunding Issue(s) | Lease End Date | Rental Payment | SBA Project Cost |
| Science Facility | 2000 VR Notes | 2001 Series I | 12/1/2034 | \$1,410,000 | \$15,040,300 |
| Main Building Renovations | 2002 Series I | 2003 Series II/2006 Series IR | 3/31/2037 | \$265,000 | \$2,999,800 |

SBA Bonded Projects

| Grand Rapids | Bond Issue | Refunding Issue(s) | Lease End Date | Rental Payment | SBA Project Cost |
|---|-------------------|--------------------|----------------|----------------|---------------------|
| Grand Rapids Total | | | | | \$18,040,100 |
| Henry Ford | Bond Issue | Refunding Issue(s) | Lease End Date | Rental Payment | SBA Project Cost |
| Patterson Technology Center | 1996 Series I | 2003 Series IR | 7/30/2003 | \$704,000 | \$5,213,540 |
| Health Careers Center | 1997 Series II | 2003 Series IR | 7/30/2003 | \$471,000 | \$4,956,100 |
| Instructional/Classroom Renovations | 2002 Series III R | 2006 Series IR | 11/30/2037 | \$435,000 | \$4,927,800 |
| Learning Resources Center | 1997 Series II | 2003 Series IR | 7/30/2003 | \$510,000 | \$5,492,200 |
| Henry Ford Total | | | | | \$20,589,640 |
| Jackson | Bond Issue | Refunding Issue(s) | Lease End Date | Rental Payment | SBA Project Cost |
| Lenawee Extension Center | 2005 Series I | 2006 Series IR | 12/31/2039 | \$120,000 | \$1,499,900 |
| Jackson Total | | | | | \$1,499,900 |
| Kalamazoo Valley | Bond Issue | Refunding Issue(s) | Lease End Date | Rental Payment | SBA Project Cost |
| Arcadia Commons Campus (Phase I) | 2001 Series II | 2005 Series I | 10/31/2036 | \$993,000 | \$11,199,900 |
| Arcadia Commons Campus (Phase I and II) | 1994 Series II | 2002 Series III R | 12/5/2002 | \$680,000 | \$6,499,000 |
| Kalamazoo Valley Total | | | | | \$17,698,900 |
| Kellogg | Bond Issue | Refunding Issue(s) | Lease End Date | Rental Payment | SBA Project Cost |
| Career Development Center/Science Building Renovation | 2005 Series I | 2006 Series IR | 8/6/2006 | \$150,000 | \$1,874,800 |
| Computer Technology | 2003 Series II | 2006 Series IR | 10/31/2038 | \$520,000 | \$5,999,900 |
| Roll Building Renovation | 2005 Series IIA | 2006 Series IR | 8/6/2006 | \$125,000 | \$1,624,800 |
| Kellogg Total | | | | | \$9,499,500 |
| Kirtland | Bond Issue | Refunding Issue(s) | Lease End Date | Rental Payment | SBA Project Cost |
| Academic Building | 2000 VR Notes | 2001 Series I | 8/1/2034 | \$318,000 | \$3,616,900 |
| Kirtland Total | | | | | \$3,616,900 |

SBA Bonded Projects

| Lake Michigan | Bond Issue | Refunding Issue(s) | Lease End Date | Rental Payment | SBA Project Cost |
|---|-----------------|--------------------|----------------|----------------|---------------------|
| Institute of Business and Technology | 1992 Series IIA | 1998 Series I | 10/1/2027 | \$475,893 | \$4,624,000 |
| South Campus Center | 1999 Series I | 2005 Series I | 5/26/2005 | \$217,000 | \$2,380,500 |
| Van Buren Center | 2003 Series II | 2006 Series IR | 10/31/2038 | \$340,000 | \$3,899,800 |
| Student Service Center | 2001 Series I | 2005 Series I | 5/26/2005 | \$185,000 | \$2,000,000 |
| Lake Michigan Total | | | | | \$12,904,300 |
| Lansing | Bond Issue | Refunding Issue(s) | Lease End Date | Rental Payment | SBA Project Cost |
| Academic Services | 1998 Series I | 2003 Series IR | 7/30/2003 | \$1,140,000 | \$12,784,900 |
| Lansing Total | | | | | \$12,784,900 |
| Macomb | Bond Issue | Refunding Issue(s) | Lease End Date | Rental Payment | SBA Project Cost |
| General Classroom Building | 1997 Series I | 2003 Series IR | 7/30/2003 | \$494,000 | \$4,449,900 |
| University Center | 2001 Series I | 2005 Series I | 2/28/2036 | \$600,000 | \$6,499,900 |
| Macomb Total | | | | | \$10,949,800 |
| Mid Michigan | Bond Issue | Refunding Issue(s) | Lease End Date | Rental Payment | SBA Project Cost |
| Mt. Pleasant Campus | 1997 Series I | 2003 Series IR | 7/30/2003 | \$182,000 | \$1,674,500 |
| Student Assessment Center | 2005 Series IIA | 2006 Series IR | 10/31/2040 | \$122,000 | \$1,582,300 |
| Instructional Center | 1999 Series I | 2005 Series I | 4/30/2034 | \$160,000 | \$1,749,500 |
| Mid Michigan Total | | | | | \$5,006,300 |
| Monroe | Bond Issue | Refunding Issue(s) | Lease End Date | Rental Payment | SBA Project Cost |
| Instructional Center, Business Training and Performing Arts | 2005 Series I | 2006 Series IR | 12/31/2039 | \$475,000 | \$5,999,800 |
| Health Education Building | 1997 Series II | 2003 Series IR | 7/30/2003 | \$321,000 | \$3,449,900 |
| Business and Technical Center, Library, Welding | 2001 Series I | 2005 Series I | 2/28/2036 | \$115,000 | \$1,249,800 |
| Monroe Total | | | | | \$10,699,500 |

SBA Bonded Projects

| Montcalm | Bond Issue | Refunding Issue(s) | Lease End Date | Rental Payment | SBA Project Cost |
|--|-------------------|-------------------------------|-----------------------|-----------------------|-------------------------|
| Vocational/Technical Facility | 2000 VR Notes | 2001 Series I | 12/1/2034 | \$525,000 | \$5,699,900 |
| Montcalm Total | | | | | \$5,699,900 |
| Mott | Bond Issue | Refunding Issue(s) | Lease End Date | Rental Payment | SBA Project Cost |
| Campus Renovations (Phase I) (Mott) | 1994 Series I | 2002 Series IIIR | 12/5/2002 | \$120,000 | \$1,187,672 |
| Gorman Building Renovations (Phase II) | 1997 Series I | 2003 Series IR | 7/30/2003 | \$314,000 | \$2,862,328 |
| Regional Technical Center | 2002 Series II | 2003 Series II/2006 Series IR | 8/31/2037 | \$1,480,000 | \$16,719,400 |
| Mott Total | | | | | \$20,769,400 |
| Muskegon | Bond Issue | Refunding Issue(s) | Lease End Date | Rental Payment | SBA Project Cost |
| Center for Higher Education | 1994 Series II | 2002 Series IIIR | 12/5/2002 | \$1,030,000 | \$9,099,000 |
| Muskegon Total | | | | | \$9,099,000 |
| North Central Michigan | Bond Issue | Refunding Issue(s) | Lease End Date | Rental Payment | SBA Project Cost |
| Multipurpose Educational Facility and General Campus Ren | 2001 Series II | 2005 Series I | 10/31/2036 | \$352,000 | \$3,967,400 |
| North Central Michigan Total | | | | | \$3,967,400 |
| Northwestern Michigan | Bond Issue | Refunding Issue(s) | Lease End Date | Rental Payment | SBA Project Cost |
| University Center (Northwestern) | 1997 Series I | 2003 Series IR | 7/30/2003 | \$250,000 | \$2,399,900 |
| Integrated Science | 2003 Series II | 2006 Series IR | 10/31/2038 | \$610,000 | \$7,049,900 |
| West Bay | 2005 Series I | 2006 Series IR | 12/31/2039 | \$645,000 | \$8,124,000 |
| Northwestern Michigan Total | | | | | \$17,573,800 |
| Oakland (CC) | Bond Issue | Refunding Issue(s) | Lease End Date | Rental Payment | SBA Project Cost |
| Building F Renovation | 1999 Series I | 2005 Series I | 1/31/2034 | \$465,000 | \$5,249,900 |
| Oakland (CC) Total | | | | | \$5,249,900 |

SBA Bonded Projects

| Schoolcraft | Bond Issue | Refunding Issue(s) | Lease End Date | Rental Payment | SBA Project Cost |
|--|----------------|-------------------------------|----------------|----------------|----------------------|
| Business and Industry Training Center | 2003 Series II | 2006 Series IR | 10/31/2038 | \$1,160,000 | \$13,368,800 |
| Student Services Building (Schoolcraft) | 1994 Series II | 2002 Series IIIR | 12/5/2002 | \$405,000 | \$3,922,000 |
| Schoolcraft Total | | | | | \$17,290,800 |
| Southwestern Michigan | Bond Issue | Refunding Issue(s) | Lease End Date | Rental Payment | SBA Project Cost |
| Business Development Center (Southwestern) | 1997 Series I | 2003 Series IR | 7/30/2003 | \$279,000 | \$2,499,900 |
| Instructional Resource | 2003 Series II | 2006 Series IR | 10/31/2038 | \$110,000 | \$1,249,800 |
| South County Extension | 2000 VR Notes | 2001 Series I | 8/1/2034 | \$120,500 | \$1,369,900 |
| Southwestern Michigan Total | | | | | \$5,119,600 |
| Washtenaw | Bond Issue | Refunding Issue(s) | Lease End Date | Rental Payment | SBA Project Cost |
| Business Education Center | 1997 Series I | 2003 Series IR | 7/30/2003 | \$329,000 | \$2,999,900 |
| Technology Education Building | 2002 Series II | 2003 Series II/2006 Series IR | 8/31/2037 | \$930,000 | \$10,499,900 |
| Plumbers and Pipefitters | 2005 Series I | 2006 Series IR | 12/31/2039 | \$160,000 | \$1,999,800 |
| Washtenaw Total | | | | | \$15,499,600 |
| West Shore | Bond Issue | Refunding Issue(s) | Lease End Date | Rental Payment | SBA Project Cost |
| Technical Center (Phase III) | 1994 Series I | 2002 Series IIIR | 12/5/2002 | \$110,000 | \$396,000 |
| West Shore Total | | | | | \$396,000 |
| Community Colleges Total | | | | | \$270,441,340 |

SBA Bonded Projects

Corrections

| | Bond Issue | Refunding Issue(s) | Lease End Date | Rental Payment | SBA Project Cost |
|---|----------------|---|----------------|----------------|------------------|
| Houghton County Minimum Security Camp | 1991 Series II | 2001 Series I | 12/1/2026 | \$563,000 | \$5,050,000 |
| Adrian Regional Correctional Facility | 1990 Series II | 1998 Series I | 1/1/2026 | \$5,832,779 | \$55,426,633 |
| Manistee Close Custody Facility (Oaks) | 1991 Series II | 2001 Series I | 12/1/2026 | \$4,237,000 | \$38,100,000 |
| Macomb Regional Prison | 1991 Series II | 2001 Series I | 12/1/2026 | \$4,685,000 | \$41,400,000 |
| Lapeer Regional Prison | 1987 Series II | 1991 Series I/2001 Series I | 7/12/2001 | \$3,800,000 | \$30,800,000 |
| Lakeland Additional Housing Units | 1997 Series I | 2003 Series IR | 7/30/2003 | \$783,000 | \$7,429,000 |
| Jackson Regional Prison | 1987 Series II | 1991 Series I/2001 Series I | 7/12/2001 | \$3,760,000 | \$30,500,000 |
| Jackson Parole Camp | 1997 Series II | 2003 Series IR | 7/30/2003 | \$950,000 | \$9,140,000 |
| Iron County Minimum Security Camp (Camp Ottawa) | 1991 Series II | 2001 Series I | 12/1/2026 | \$475,000 | \$4,150,000 |
| Ionia Maximum Security Prison | 1987 Series II | 1991 Series I/2001 Series I | 7/12/2001 | \$4,030,000 | \$32,700,000 |
| Muskegon Regional Prison | 1988 Series II | 1993 Series I | 8/31/1993 | \$4,980,000 | \$36,000,000 |
| Huron Valley Women's Correctional Facility | 1988 Series II | 1993 Series I | 8/31/1993 | \$450,000 | \$3,430,000 |
| Newberry Mental Health Facility Conversion | 1997 Series I | 2003 Series IR | 7/30/2003 | \$1,050,000 | \$10,096,100 |
| St. Louis Facility | 2000 VR Notes | 2001 Series I | 12/1/2034 | \$7,140,000 | \$74,250,000 |
| Detroit Regional Prison | 1989 Series I | 1991 Series I/2003 Series I/2006 Series I | 8/6/2006 | \$10,674,000 | \$89,000,000 |
| Chippewa Correctional Facilities | 1989 Series I | 1991 Series I/2003 Series I/2006 Series I | 8/6/2006 | \$5,953,000 | \$52,300,000 |
| Carson City Regional Prison | 1988 Series II | 1993 Series I | 8/31/1993 | \$4,980,000 | \$36,000,000 |
| Camp Nokomis | 1994 Series II | 2002 Series IIR | 12/5/2002 | \$365,000 | \$3,500,000 |
| Baraga Max Security Correction Facility | 1991 Series II | 2001 Series I | 12/1/2026 | \$4,205,000 | \$37,500,000 |
| Baraga Additional Housing Units | 1997 Series II | 2003 Series IR | 7/30/2003 | \$772,000 | \$8,397,900 |
| Alger Correctional Facility | 1990 Series II | 1998 Series I | 1/1/2026 | \$4,297,867 | \$42,387,781 |
| Alger Additional Housing Units | 1997 Series II | 2003 Series IR | 7/30/2003 | \$399,000 | \$4,349,000 |
| IMAX Riverside Correctional Facility | 1997 Series I | 2003 Series IR | 7/30/2003 | \$238,000 | \$2,263,200 |
| Ypsilanti Correctional Facility | 1979 Series I | | 10/1/1991 | \$2,193,283 | \$19,925,000 |
| Florence Crane Additional Housing Units | 2000 Series I | 2005 Series IIR | 11/30/2035 | \$400,000 | \$4,525,000 |
| Baraga Additional Housing Units II | 2000 Series I | 2005 Series IIR | 11/30/2035 | \$305,000 | \$3,460,000 |
| Parnall Correctional Facility | 2002 Series II | 2003 Series II | 12/1/2003 | \$440,000 | \$4,960,000 |

SBA Bonded Projects

| | Bond Issue | Refunding Issue(s) | Lease End Date | Rental Payment | SBA Project Cost |
|---|----------------|---|----------------|------------------------|------------------|
| Multilevel Correctional Facility at Ionia | 2002 Series I | 2003 Series II | 12/1/2003 | \$5,190,000 | \$58,579,900 |
| Cooper Street Additional Housing Units #1,2,3 | 2001 Series II | 2005 Series I | 5/26/2005 | \$787,000 | \$8,700,000 |
| Camp Ojibway Additional Housing Units | 2001 Series I | 2005 Series I | 5/26/2005 | \$69,200 | \$20,645,179 |
| Saginaw Additional Housing Units | 2001 Series I | 2005 Series I | 5/26/2005 | \$851,000 | \$9,227,000 |
| Macomb Additional Housing Units | 2001 Series I | 2005 Series I | 5/26/2005 | \$874,000 | \$9,477,000 |
| Pugsley Additional Housing Units | 2001 Series I | 2005 Series I | 5/26/2005 | \$1,875,000 | \$20,320 |
| Mid Michigan Temp Facility (St. Louis) | 1990 Series II | 1998 Series I | 12/17/1998 | \$1,166,935 | \$11,012,257 |
| Ypsilanti Correctional Facility (Phase IV) | 1982 Series II | | 10/1/1991 | \$435,000 | \$2,540,000 |
| St. Louis Correctional Facility Level I | 2000 Series I | 2005 Series IIR | 11/30/2035 | \$1,895,000 | \$21,700,000 |
| Western Wayne Correctional Facility | 1990 Series II | 1998 Series I/2005 Series IIB Multi-Modal | 12/21/2005 | \$3,098,993 | \$30,456,746 |
| Upper Peninsula Detention Center | 1994 Series II | 2002 Series IIIR | 12/5/2002 | \$440,000 | \$4,212,500 |
| Standish Additional Housing Units | 1997 Series I | 2003 Series IR/2006 Series IR | 8/6/2006 | \$465,000 | \$4,360,000 |
| Standish Correctional Facility | 1990 Series II | 1998 Series I | 12/17/1998 | \$3,956,894 | \$38,946,152 |
| SPSM Reorganization (Phase II) | 2000 Series I | 2005 Series IIR | 10/26/2005 | \$3,195,000 | \$36,600,000 |
| SPSM Reorganization (Phase I) | 1997 Series II | 2003 Series IR/2006 Series IR | 10/31/2032 | \$7,660,000 | \$73,500,000 |
| Schoolcraft County Minimum Security Camp | 1991 Series II | 2001 Series I | 12/1/2026 | \$420,000 | \$3,750,000 |
| Saginaw Regional Correctional Facility | 1991 Series II | 2001 Series I | 12/1/2026 | \$3,920,000 | \$35,100,000 |
| Oaks Additional Housing Units | 1997 Series II | 2003 Series IR | 7/30/2003 | \$738,000 | \$8,032,200 |
| Thumb Additional Housing Units | 2001 Series I | 2005 Series I | 5/26/2005 | \$735,000 | \$7,972,000 |
| Corrections Total | | | | \$1,071,870,868 | |

SBA Bonded Projects

Other State Agencies

| Agriculture | Bond Issue | Refunding Issue(s) | Lease End Date | Rental Payment | SBA Project Cost |
|---|-----------------|---|----------------|----------------|----------------------|
| Geagley Lab | 2002 Series II | 2003 Series II/2006 Series IR | 8/6/2006 | \$1,050,000 | \$11,900,000 |
| Agriculture Total | | | | | \$11,900,000 |
| Community Health | Bond Issue | Refunding Issue(s) | Lease End Date | Rental Payment | SBA Project Cost |
| Forensic Psychiatry Center | 2005 Series IIA | 2006 Series IR | 10/31/2040 | \$8,449,000 | \$109,899,900 |
| Fairlawn Center | 1992 Series I | 1998 Series I | 12/17/1998 | \$463,131 | \$4,500,000 |
| Walter Reuther Psychiatric Hospital Power Plant | 1992 Series I | 1998 Series I | 12/17/1998 | \$194,225 | \$1,799,000 |
| Walter Reuther Psychiatric Hospital Facility | 1982 Series II | | 10/1/1991 | \$2,482,000 | \$14,364,400 |
| State Psychiatric Hospital | 1994 Series I | 2002 Series IIIR | 12/5/2002 | \$3,200,000 | \$29,999,000 |
| Community Health Total | | | | | \$160,562,300 |
| Education | Bond Issue | Refunding Issue(s) | Lease End Date | Rental Payment | SBA Project Cost |
| School for Deaf and Blind | 2000 VR Notes | 2001 Series I | 8/1/2034 | \$130,000 | \$1,485,000 |
| Education Total | | | | | \$1,485,000 |
| Human Services | Bond Issue | Refunding Issue(s) | Lease End Date | Rental Payment | SBA Project Cost |
| W.J. Maxey Boys Training School | 2001 Series II | 2005 Series I | 5/26/2005 | \$3,307,000 | \$37,231,000 |
| Human Services Total | | | | | \$37,231,000 |
| Management and Budget | Bond Issue | Refunding Issue(s) | Lease End Date | Rental Payment | SBA Project Cost |
| Lottery Building | 1991 Series II | 2001 Series I | 12/1/2026 | \$1,520,000 | \$13,700,000 |
| Allegan Street Parking Ramp | 1997 Series II | 2003 Series IR/2006 Series IR | 8/6/2006 | \$1,994,000 | \$20,790,000 |
| Saginaw State Office Building | 1982 Series I | 1986 Series III/1991 Series I/2001 Series I | 5/1/2002 | \$1,267,000 | \$7,140,000 |
| State Library Museum and Archives Facility | 1986 Series II | 1991 Series I | 12/27/1991 | \$5,290,716 | \$28,900,000 |
| Olds Plaza (Romney Building) | 1990 Series II | 1998 Series I | 1/1/2026 | \$2,282,097 | \$23,209,155 |

SBA Bonded Projects

| Management and Budget | Bond Issue | Refunding Issue(s) | Lease End Date | Rental Payment | SBA Project Cost |
|--|-------------------|---|----------------|----------------|----------------------|
| Jackson State Office Building | 1982 Series I | 1986 Series III/1991 Series I | 12/27/1991 | \$872,000 | \$5,166,000 |
| Flint Water Street Parking Condo | 1985 Series I | | 1/1/1996 | \$717,384 | \$3,621,000 |
| Flint State Office Building | 1982 Series I | 1986 Series III/1991 Series I/2001 Series I | 7/12/2001 | \$1,365,000 | \$8,076,000 |
| Ottawa Street State Office Buildings | 1982 Series I | 1986 Series III/1991 Series I | 12/27/1991 | \$6,222,000 | \$34,027,000 |
| Secondary Complex Warehouse | 2002 Series III R | 2006 Series IR | 11/30/2037 | \$3,990,000 | \$44,999,900 |
| Constitution Hall | 2005 Series IIR | | 10/31/2040 | \$0 | \$122,363,190 |
| State Capitol Restoration (Phase I and II) | 1992 Series I | 1998 Series I | 8/1/2027 | \$6,404,274 | \$61,473,600 |
| Hall of Justice | 2002 Series III R | 2006 Series IR | 11/30/2037 | \$7,780,000 | \$87,799,900 |
| Roosevelt Parking Facility | 2005 Series IIA | 2006 Series IR | 8/6/2006 | \$507,000 | \$6,506,400 |
| Grand Tower | 2002 Series II | 2003 Series II | 12/1/2003 | \$3,810,000 | \$42,988,000 |
| Management and Budget Total | | | | | \$510,760,145 |

| Michigan State Police | Bond Issue | Refunding Issue(s) | Lease End Date | Rental Payment | SBA Project Cost |
|------------------------------------|----------------|--------------------|----------------|----------------|----------------------|
| MSP Radio System (Phase II) | 2000 MSP II | | 5/31/2019 | \$5,868,000 | \$42,660,800 |
| MSP Radio System (Phase I) | 1997 Series A | 2004 MSP V | 5/27/2004 | \$4,710,000 | \$33,384,477 |
| Taylor Project | 1997 Series II | 2003 Series IR | 7/30/2003 | \$233,000 | \$2,556,500 |
| MSP Radio System (Phase III) | 2001 MSP III | | 5/31/2019 | \$6,726,996 | \$58,215,000 |
| MSP Radio System (Phase IV) | 2002 MSP IV | 2004 MSP V | 5/27/2004 | \$4,305,000 | \$34,900,000 |
| MSP Radio System (Phase V) | 2004 MSP V | | 5/31/2019 | \$4,435,000 | \$155,350,000 |
| State Police Crime Lab | 2001 Series II | 2005 Series I | 5/26/2005 | \$2,074,000 | \$23,325,000 |
| Oak Park Project | 1997 Series II | 2003 Series IR | 7/30/2003 | \$159,000 | \$1,736,500 |
| Michigan State Police Total | | | | | \$352,128,277 |

| Natural Resources | Bond Issue | Refunding Issue(s) | Lease End Date | Rental Payment | SBA Project Cost |
|--|---------------|--------------------|----------------|----------------|---------------------|
| State Fish Hatchery Renovations Oden Project | 2002 Series I | 2003 Series II | 12/1/2003 | \$1,060,000 | \$11,801,000 |
| State Fish Hatchery Renovations Platte River | 2005 Series I | 2006 Series IR | 12/31/2039 | \$650,000 | \$8,199,000 |
| Marquette Fish Hatchery | 1994 Series I | 2002 Series III R | 12/5/2002 | \$235,000 | \$2,300,000 |
| Natural Resources Total | | | | | \$22,300,000 |

SBA Bonded Projects

| Natural Resources & Community Health | Bond Issue | Refunding Issue(s) | Lease End Date | Rental Payment | SBA Project Cost |
|---|---------------|--------------------|----------------|----------------|------------------------|
| DNR/DPH Joint Lab | 1992 Series I | 1998 Series I | 12/17/1998 | \$1,472,551 | \$14,308,000 |
| Natural Resources & Community Health Total | | | | | \$14,308,000 |
| Other State Agencies Total | | | | | \$1,110,674,722 |