



## CONTENTS

<b>EXECUTIVE SUMMARY</b>	<b>Page ii</b>
<b>BOND CHARTS</b>	<b>Pages 1-6</b>
<b>RENT CHARTS</b>	<b>Pages 7-8</b>
<b>SAVINGS CHART</b>	<b>Page 9</b>
<b>BOND ISSUE INFORMATION</b>	<b>Pages 10-11</b>
<b>BONDED PROJECTS</b>	<b>Pages 12-26</b>

**COLOR COPIES NOT PRINTED  
AT STATE EXPENSE**

## EXECUTIVE SUMMARY

Since its inception in 1979, the State Building Authority (SBA) has financed nearly 250 projects for state government and higher education institutions. SBA is a major source for higher education funding, having provided approximately \$2.15 billion to finance construction projects at state universities and over \$270 million for projects at community colleges. Over \$320 million in SBA financing has also been used to build the Michigan Public Safety Communications System, a state of the art communications system for law enforcement and emergency personnel.

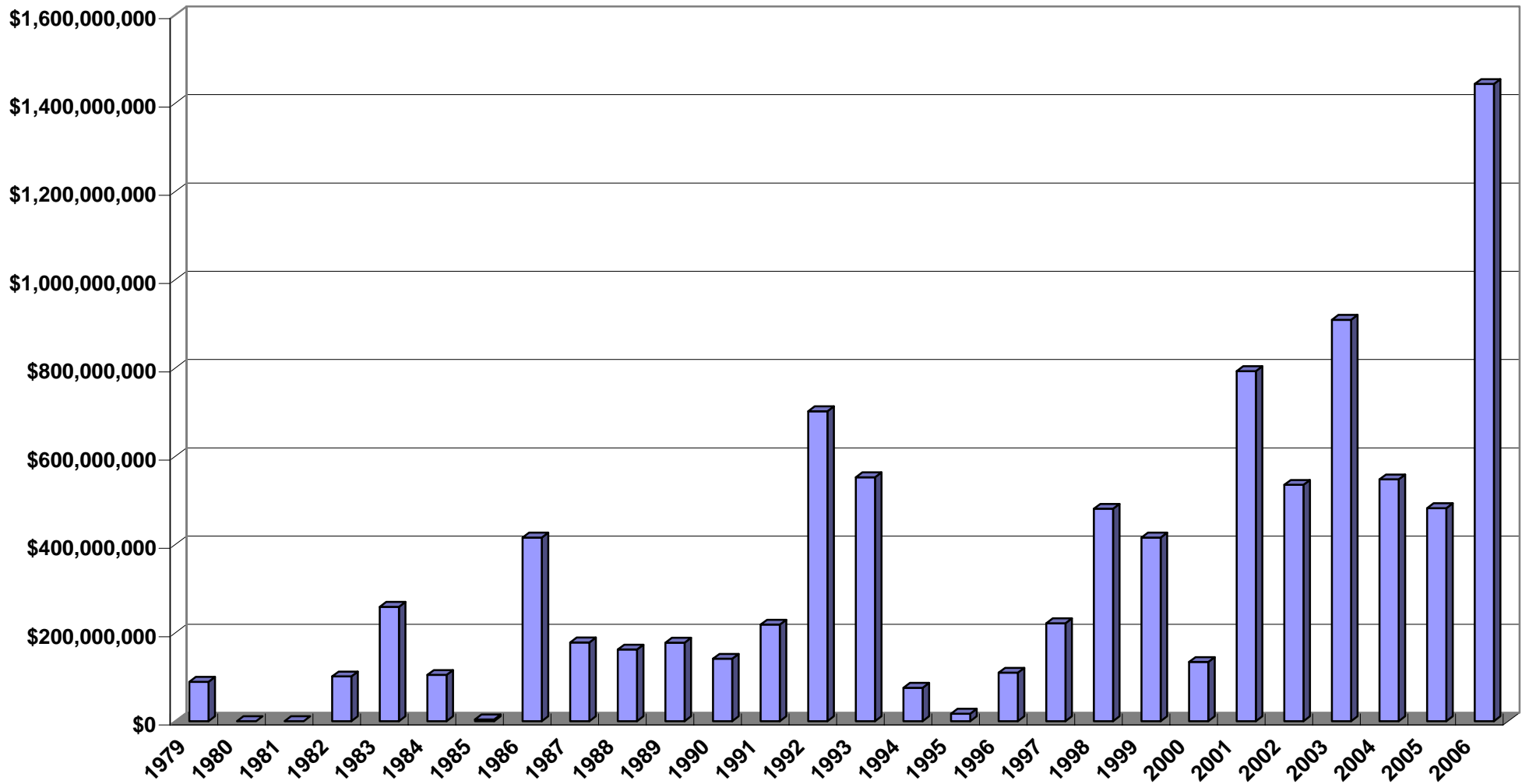
This report summarizes SBA activities from its inception in fiscal years 1979 through 2006. It contains information on every SBA bond issue and project, as well as information on savings generated through SBA efforts.

Any questions or comments about this report or SBA related issues may be directed to SBA staff:

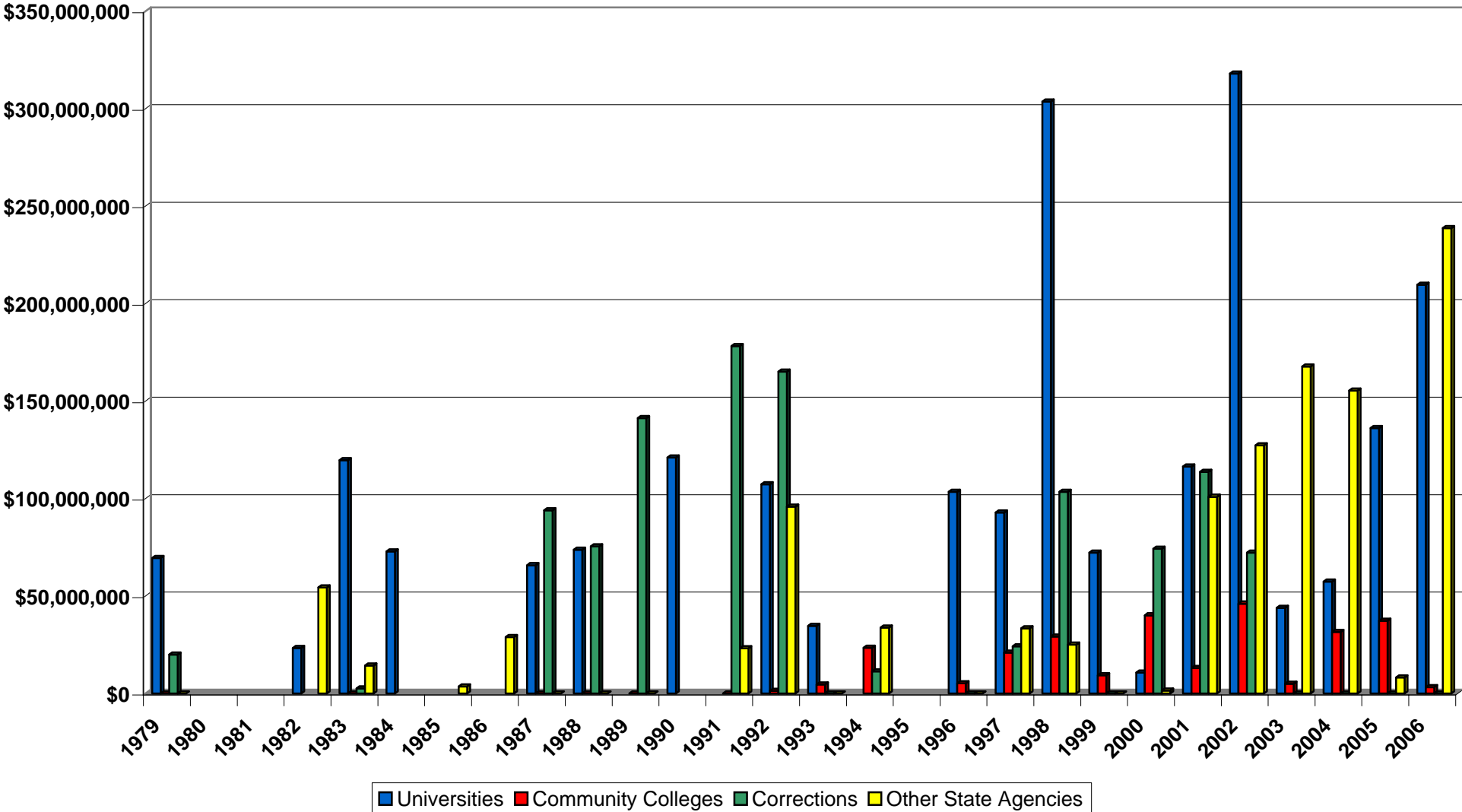
Deborah Roberts, Executive Director, (517) 373-3806  
Carol Schulz, Chief Financial Officer, (517) 373-6847  
TeAnn Smith, Analyst, (517) 241-1636

State Building Authority  
Department of Management and Budget  
1<sup>st</sup> Floor Lewis Cass Building  
320 South Walnut Street  
Lansing, MI 48933

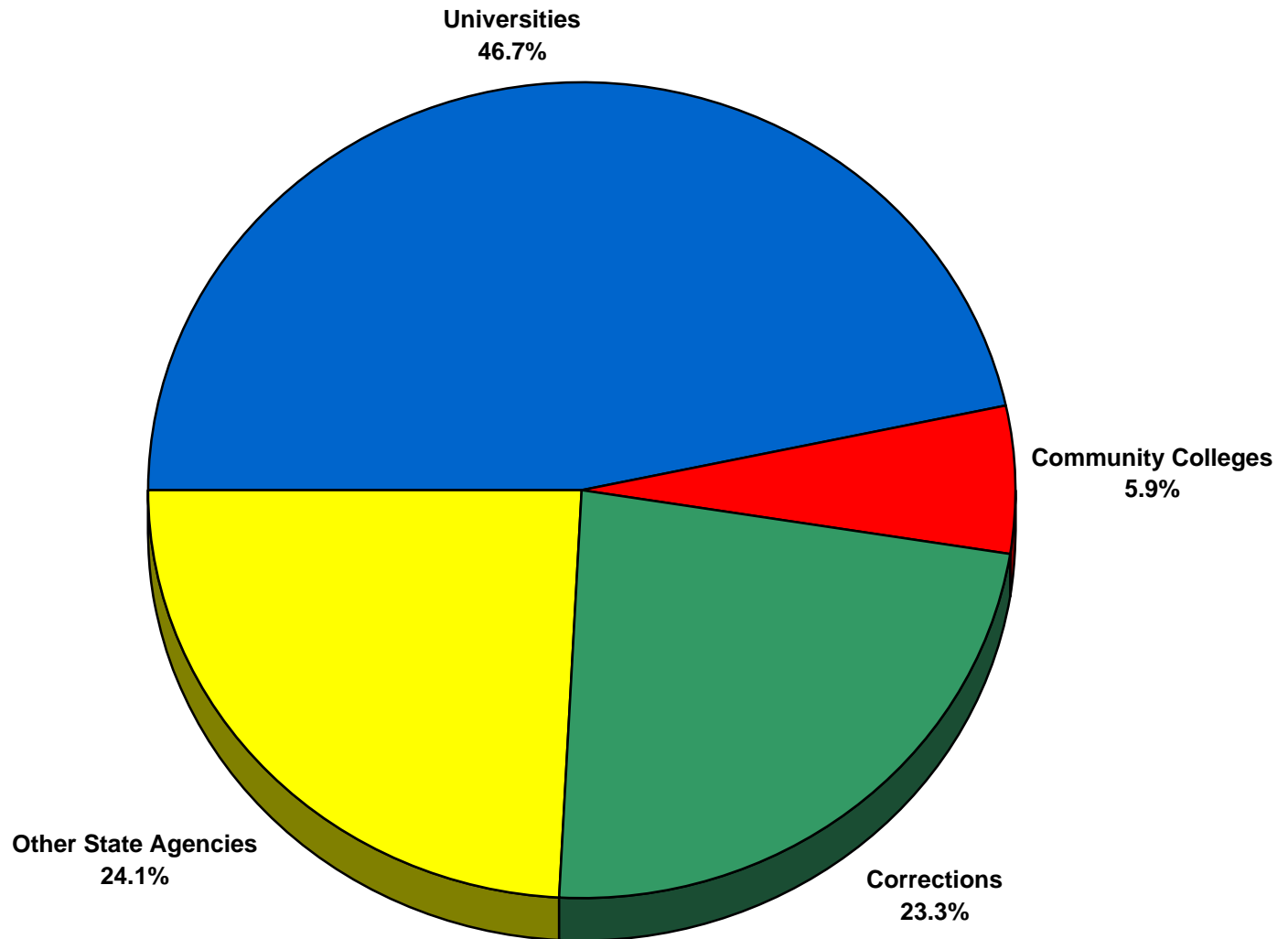
# Bond Principal Issued FY 1979- FY 2006 (Including Refundings)



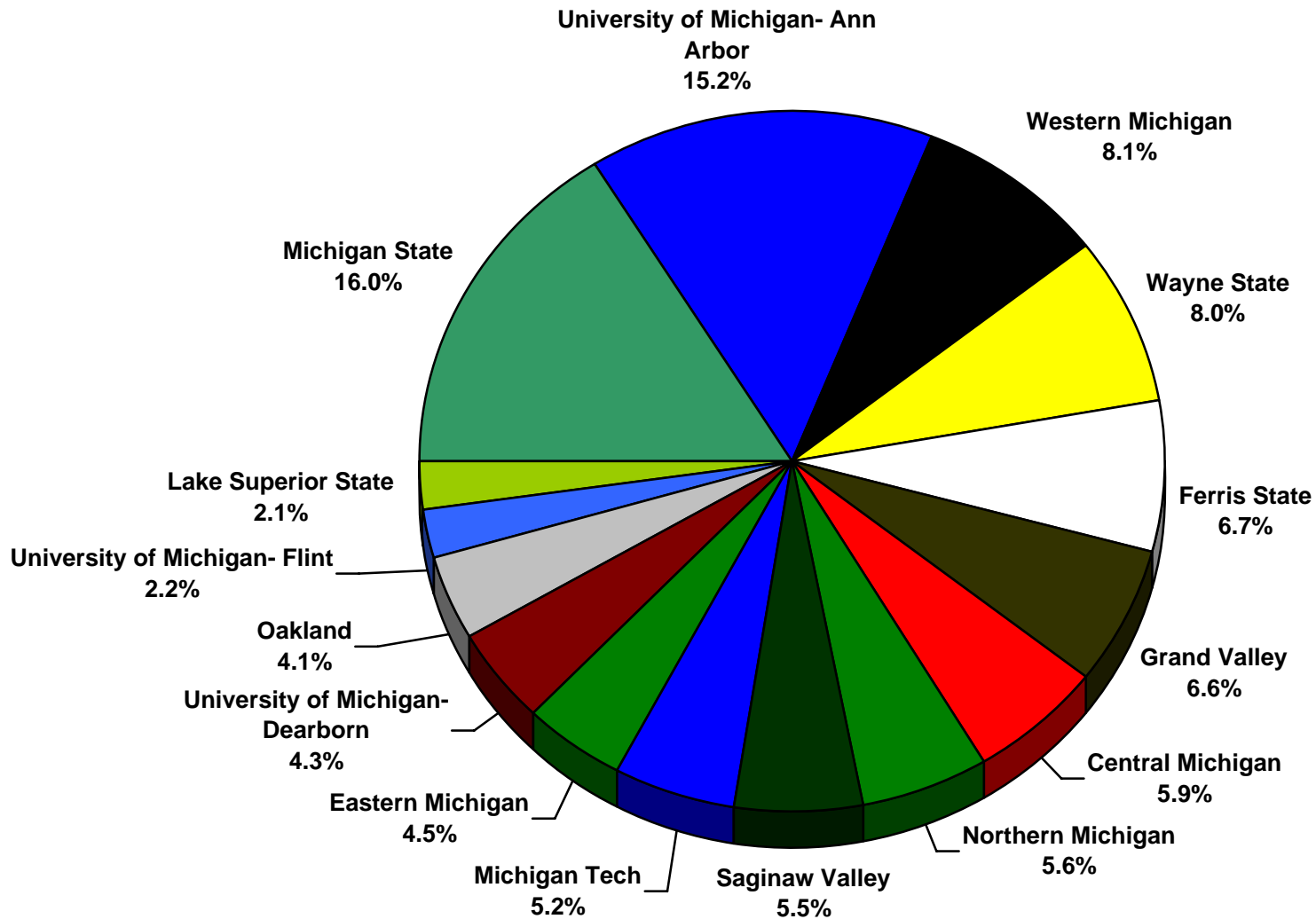
## Bonds Per Year By Recipient FY 1979- FY 2006



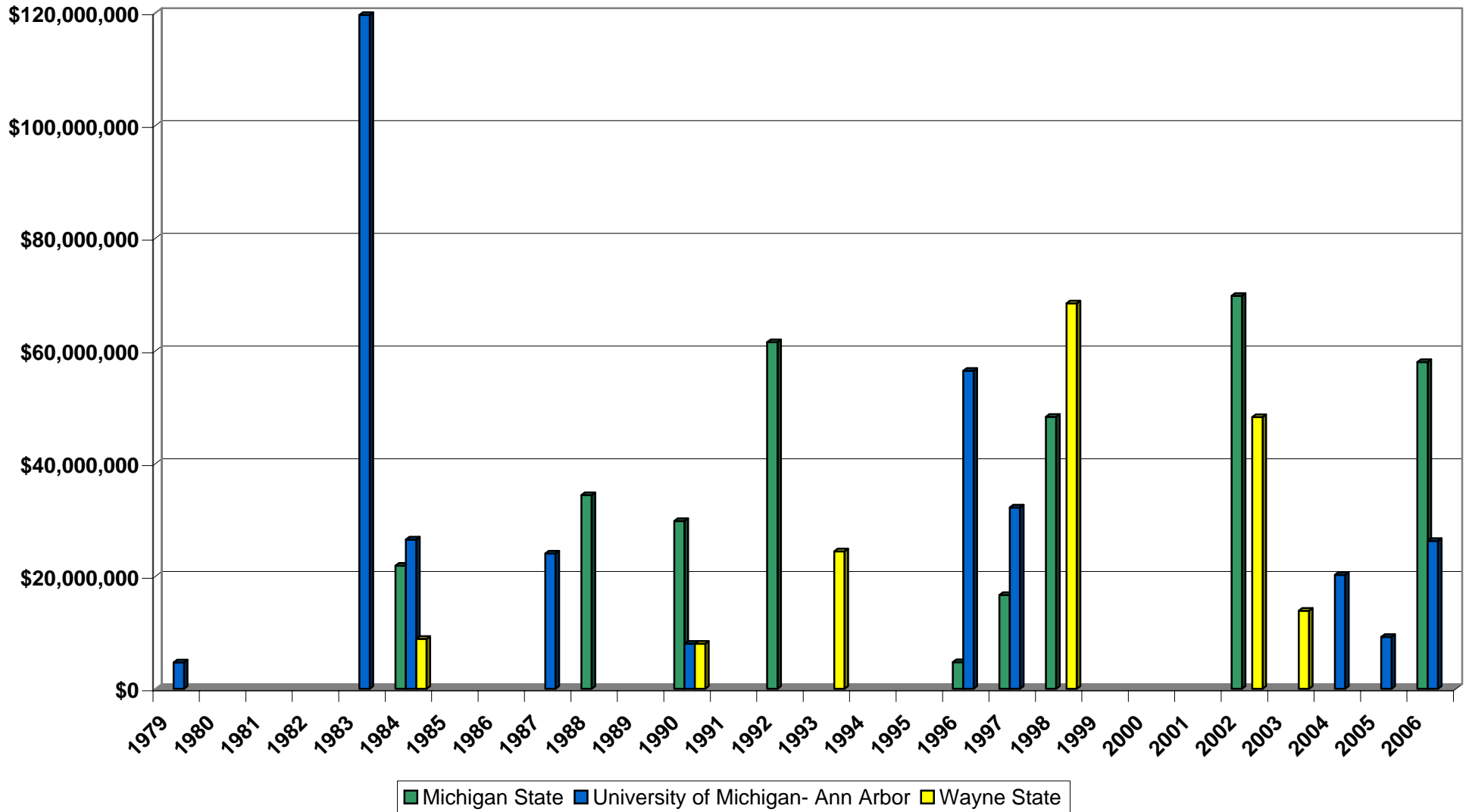
## Total Bonds By Recipient FY 1979- FY 2006



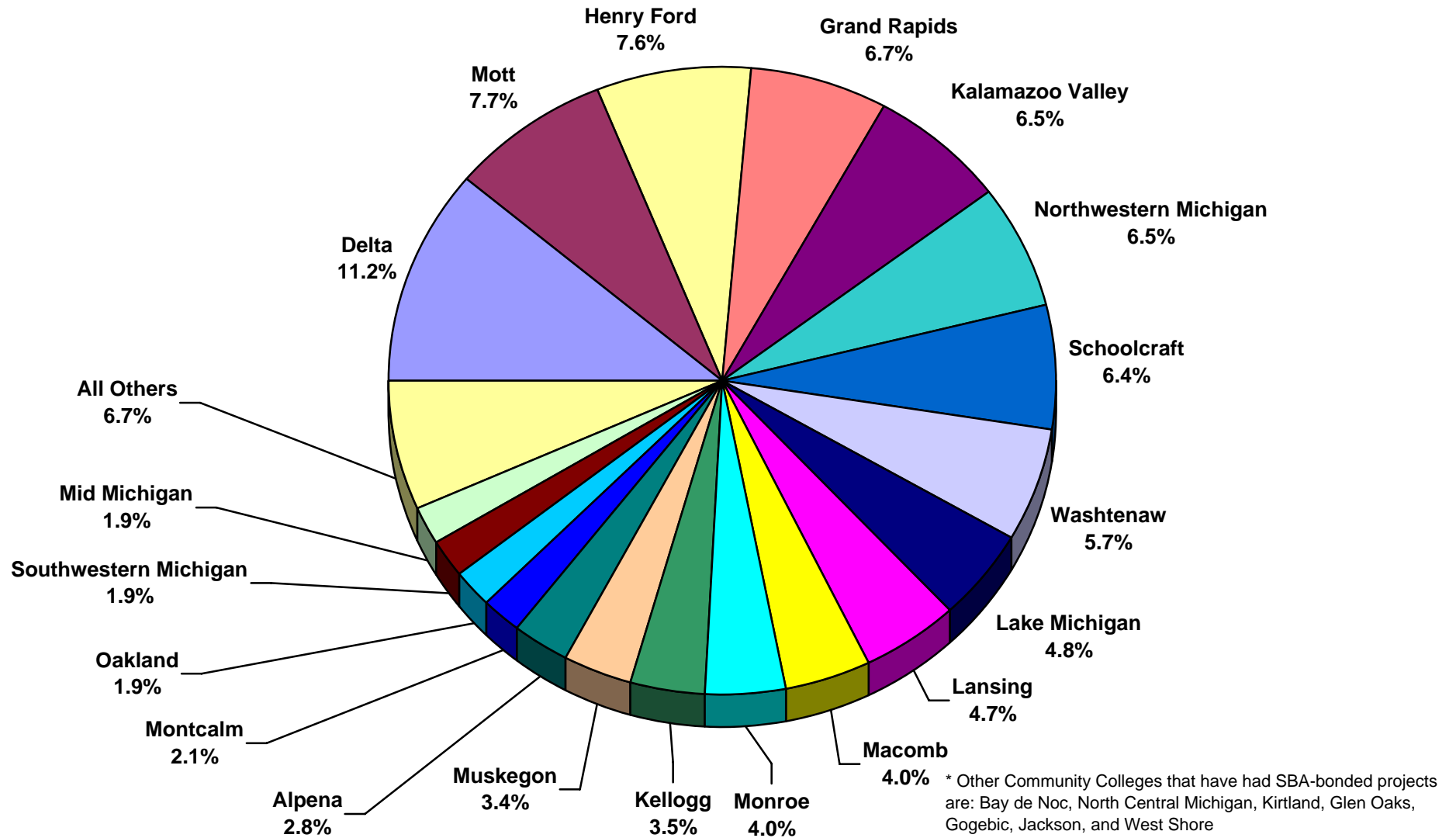
## Percent of Bonds Received By University FY 1979- FY 2006



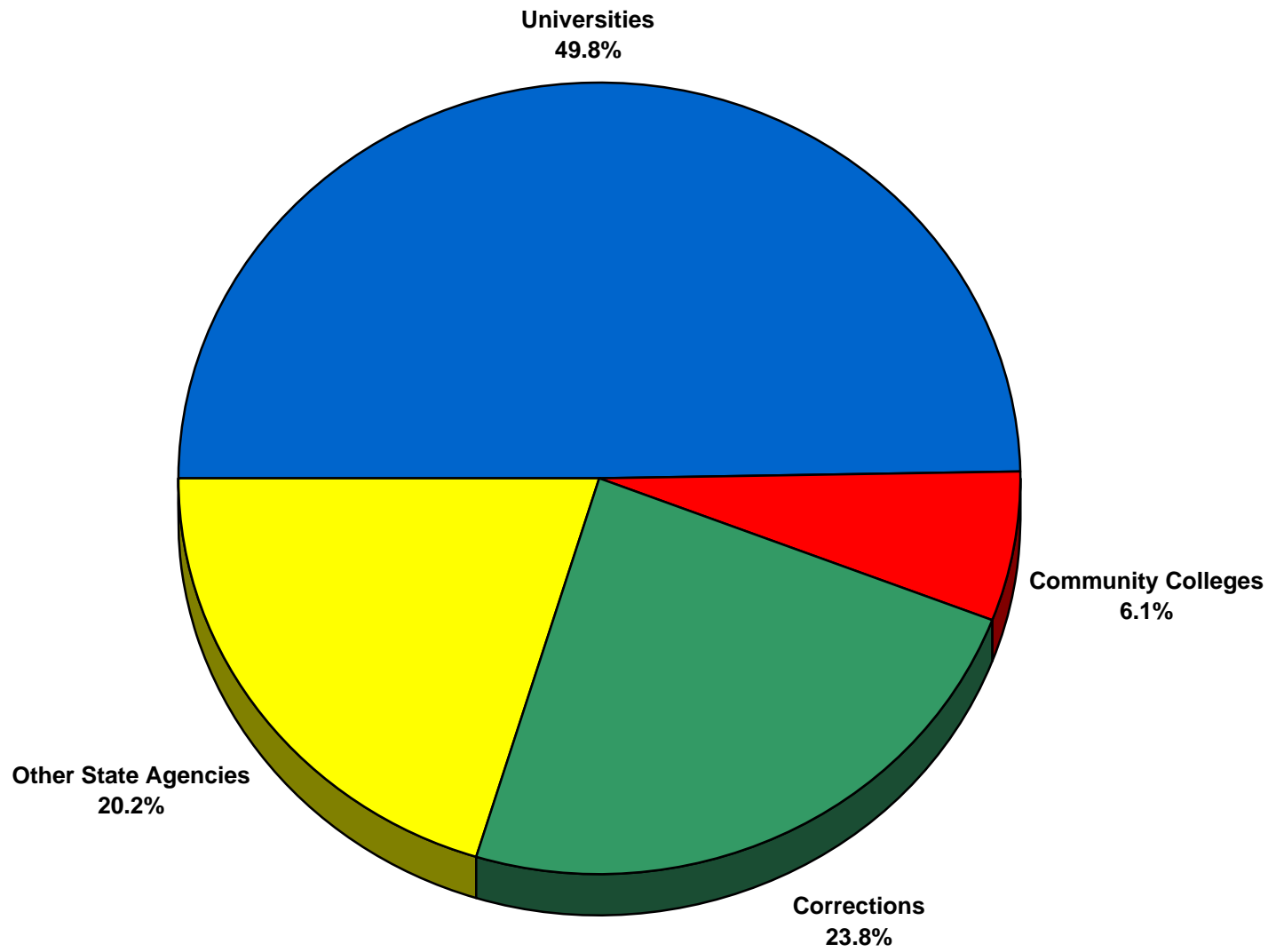
## Selected University Bonds By Year FY 1979- FY 2006



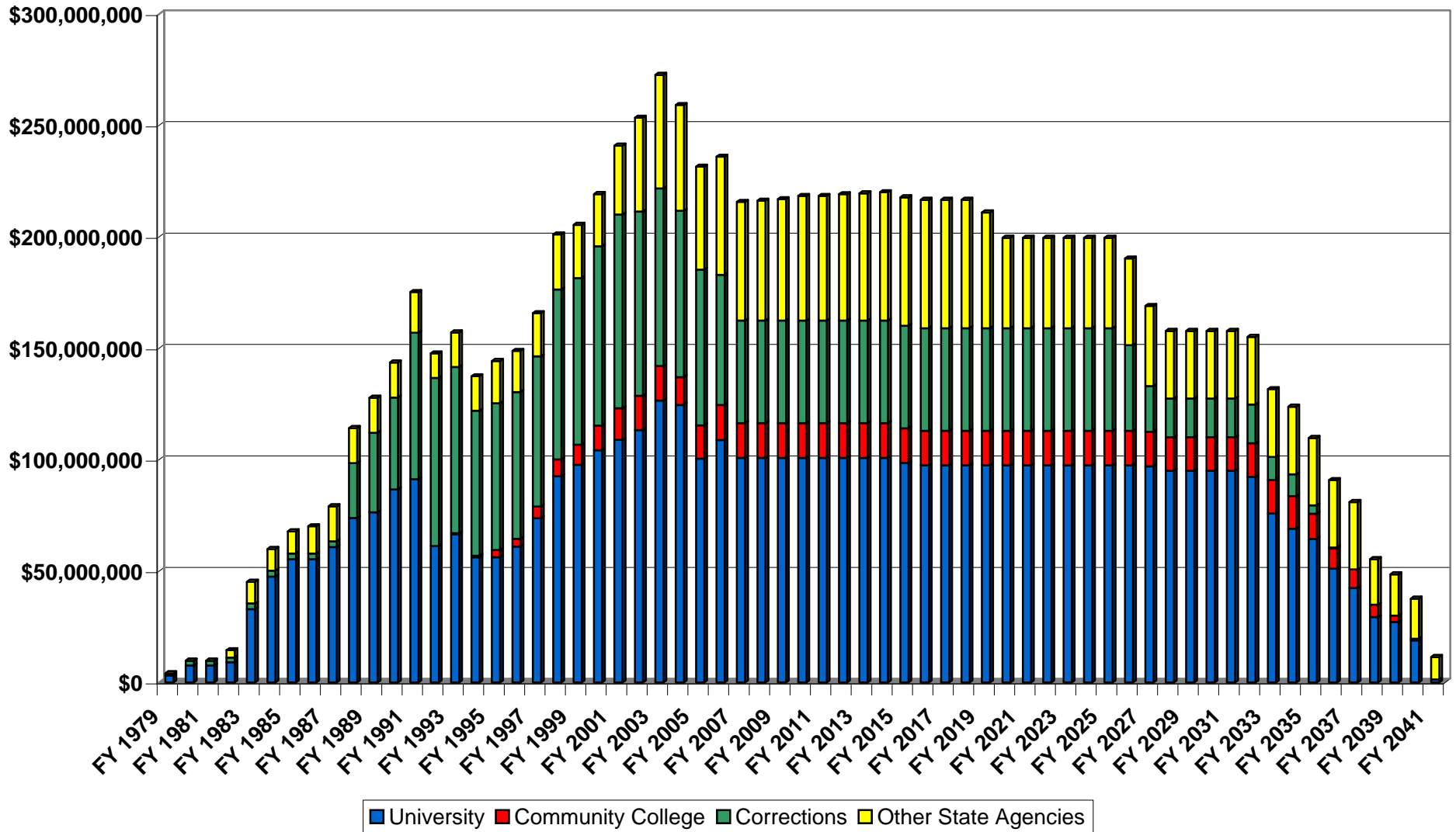
## Bonds By Community College FY 1979- FY 2006



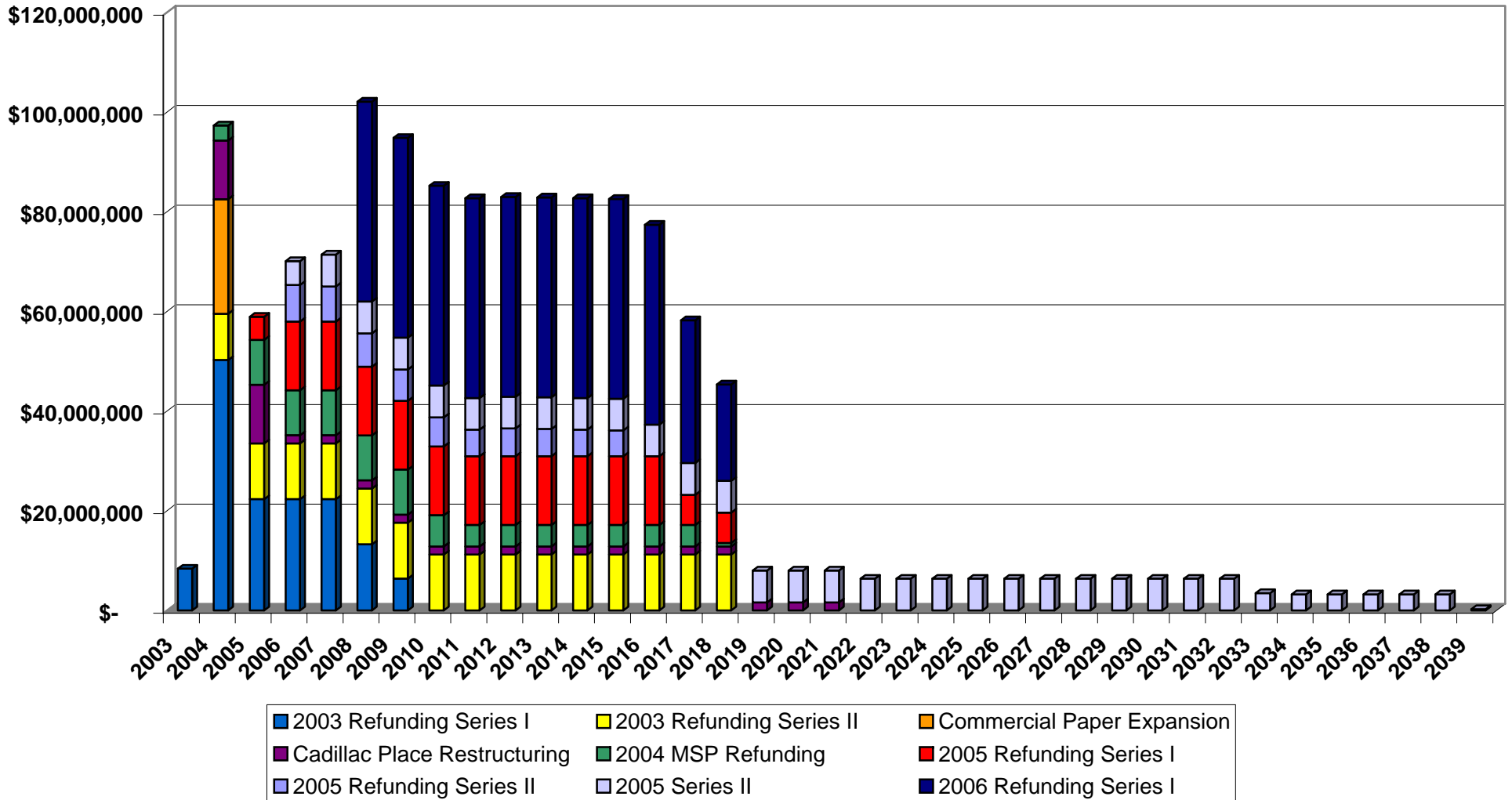
# Total Rent By Recipient FY 1979- FY 2041



## Rent Per Year By Recipient FY 1979-FY 2041



## SBA Savings By Year FY 2003- FY 2039



## SBA Bond Issues

Bond Issue	Dated	Closing Date	First Maturity Date	Last Maturity Date	Bond Principal	Refunding Issue(s)
1979 Series I	4/1/1979	4/30/1979	4/1/1982	4/1/1999	\$89,450,000	
1982 Series I	4/1/1982	5/19/1982	4/1/1983	4/1/2002	\$101,415,000	
1982 Series II	10/1/1982	11/9/1982	10/1/1983	10/1/1995	\$21,085,000	
1982 Series III	12/1/1982	12/30/1982	12/1/1987	12/1/2012	\$237,945,000	
1984 Series I	2/15/1984	3/22/1984	3/1/1987	3/1/2001	\$104,910,000	
1985 Series I	5/1/1985	5/1/1985	7/1/1985	7/1/1992	\$4,300,000	
1986 Series I	5/1/1986	5/29/1986	12/1/1986	12/1/2004	\$271,000,000	
1986 Series II	8/1/1986	8/14/1986	4/1/1990	4/1/2001	\$39,705,000	
1986 Series III	8/1/1986	8/14/1986	4/1/1987	4/1/1999	\$105,310,000	
1987 Series I	3/1/1987	3/26/1987	3/1/1988	3/1/1998	\$77,308,007	
1987 Series II	9/1/1987	9/10/1987	9/1/1988	9/1/2001	\$101,390,000	
1988 Series I	6/1/1988	6/15/1988	4/1/1989	4/1/2004	\$78,703,280	
1988 Series II	9/1/1988	9/22/1988	10/1/1989	10/1/2002	\$83,717,159	
1989 Series I	5/15/1989	5/23/1989	10/1/1990	10/1/2008	\$158,593,491	
1989 Series A	7/6/1989	7/13/1989	7/1/1990	7/1/1994	\$19,255,000	
1990 Series I	1/1/1990	1/25/1990	10/1/1990	10/1/2006	\$141,565,000	
1990 Series II	1/15/1991	2/14/1991	10/1/1991	10/1/2009	\$218,875,000	
1991 Series I	12/1/1991	12/27/1991	10/1/1992	10/1/2021	\$296,045,000	
1991 Series II	12/1/1991	12/27/1991	10/1/1992	10/1/2021	\$197,835,000	
1992 Series I	8/1/1992	8/26/1992	10/1/1995	10/1/2010	\$208,550,000	Refunded by 1998 IR
1992 Series A	10/1/1992	10/29/1992	10/1/1993	10/1/1996	\$16,145,000	
1992 Series IIA	10/1/1992	10/29/1992	10/1/1997	10/1/2012	\$37,670,000	
1992 Series IIB	10/1/1992	10/29/1992	10/1/1993	10/1/1997	\$7,475,000	
1993 Series I	8/1/1993	8/31/1993	10/1/1993	10/1/2016	\$491,540,000	Refunded by 2003 IR
1994 Series A	3/15/1994	4/7/1994	10/1/1994	10/1/1997	\$6,850,000	
1994 Series I	3/15/1994	4/7/1994	10/1/1995	10/1/2009	\$39,795,000	Refunded by 2002 III
1994 Series II	9/29/1994	9/29/1994	10/1/1995	10/1/2010	\$29,088,682	Refunded by 2002 III
1995 Series A	6/1/1995	6/8/1995	10/1/1995	10/1/2000	\$17,200,000	
1996 Series I	2/15/1996	3/14/1996	10/1/1996	10/1/2009	\$109,905,000	Refunded by 2003 IR

## SBA Bond Issues

Bond Issue	Dated	Closing Date	First Maturity Date	Last Maturity Date	Bond Principal	Refunding Issue(s)
1997 Series I	1/15/1997	2/6/1997	10/1/1997	10/1/2010	\$144,790,000	Refunded by 2003 IR
1997 Series A	5/15/1997	6/12/1997	10/1/1997	10/1/2005	\$34,255,000	Refunded by 2004 IR
1997 Series B	8/1/1997	8/13/1997	10/1/1997	10/1/2001	\$42,865,000	
1997 Series II	11/15/1997	12/3/1997	10/15/1998	10/15/2014	\$371,920,225	Refunded by 2003 IR
1998 Series I	7/30/1998	7/30/1998	10/15/1998	10/15/2014	\$109,475,000	Refunded by 2003 IR
1998 Series IR	11/15/1998	12/17/1998	10/15/1999	10/15/2021	\$330,405,000	
1999 Series I	5/18/1999	5/18/1999	10/15/1999	10/15/2016	\$85,690,000	Refunded by 2005 IR
2000 VR Notes	5/11/2000	5/11/2000	Unknown	Unknown	\$134,275,000	Refunded by 2001 IR, pd
2000 MSP II	10/1/2000	10/26/2000	10/1/2001	10/1/2011	\$45,800,000	Refunded by 2004 IR
2000 Series I	12/7/2000	12/7/2000	10/15/2001	10/15/2021	\$147,855,000	Refunded by 2005 IIR
2001 Series I	3/15/2001	3/15/2001	10/15/2001	10/15/2017	\$121,680,000	Refunded by 2005 IR
2001 MSP III	5/1/2001	5/17/2001	10/1/2001	10/1/2012	\$58,215,000	Refunded by 2004 IR
2001 Series IR	7/12/2001	7/12/2001	10/15/2002	10/15/2024	\$419,730,000	
2001 Series II	11/8/2001	11/8/2001	10/15/2002	10/15/2018	\$170,095,000	Refunded by 2005 IR
2002 Series I	4/17/2002	4/17/2002	Variable	Variable	\$215,210,000	Refunded by 2003 IIR
2002 Series II	9/12/2002	9/12/2002	Variable	Variable	\$150,250,000	Refunded by 2003 IIR
2002 MSP IV	12/1/2002	12/19/2002	10/1/2003	10/1/2013	\$34,900,000	Refunded by 2004 IR
2002 Series IIIR	12/5/2002	12/5/2002	10/15/2003	10/15/2026	\$215,205,000	Refunded by 2006 IR
2003 Series IR	7/30/2003	7/30/2003	10/15/03	10/15/2017	\$659,420,000	
2003 Series II	12/1/2003	12/1/2003	10/15/04	10/15/24	\$392,590,000	Partially refunded by 2006
2004 MSP V	5/27/2004	5/27/2004	10/1/04	10/1/18	\$155,350,000	
2005 Series I	1/27/2005	1/27/2005	Variable	Variable	\$189,300,000	Refunded by 2006 IR
2005 Series IR	5/26/2005	5/26/2005	10/15/05	10/15/2033	\$293,395,000	
2005 Series IIR	10/26/2005	10/26/2005	10/15/06	10/15/2035	\$242,805,000	
2005 Series IIA	12/21/2005	12/21/2005	Variable	Variable	\$343,600,000	Partially refunded by 2006
2005 Series IIB	1/19/2006	1/19/2006	Variable	Variable	\$9,900,000	
2006 Series IRB	9/6/2006	9/6/2006	10/15/08	10/15/13	\$13,735,000	
2006 Series IRA	9/6/2006	9/6/2006	10/15/13	10/15/36	\$833,631,158	

## SBA Bonded Projects

### Universities

Central Michigan	Bond Issue	Refunding Issue(s)	Lease End Date	Rental Payment	SBA Project Cost
Science Building (Phase II)	1992 Series I	1998 Series I	8/1/2027	\$2,454,140	\$23,000,000
Music Building	1997 Series II	2003 Series IR/2006 Series IR	8/6/2006	\$2,053,000	\$20,785,000
Industrial Education and Technology Building	1988 Series I	1991 Series I	12/27/1991	\$1,260,000	\$9,500,000
Park Library Addition and Remodeling	2002 Series I	2003 Series II/2006 Series IR	3/31/2037	\$3,320,000	\$37,499,900
Health Professions Building	2005 Series IIA	2006 Series IR	10/31/2040	\$2,813,000	\$36,585,800
<b>Central Michigan Total</b>					<b>\$127,370,700</b>
Eastern Michigan	Bond Issue	Refunding Issue(s)	Lease End Date	Rental Payment	SBA Project Cost
Music Building (EMU)	1979 Series I		10/1/1991	\$879,356	\$7,930,000
Library Replacement	1998 Series I	2003 Series IR/2006 Series IR	8/6/2006	\$4,045,000	\$40,641,600
College of Education	2000 VR Notes	2001 Series I	12/1/2034	\$1,028,000	\$10,737,720
Physical Plant	1996 Series I	2003 Series IR	7/30/2003	\$289,000	\$2,772,000
Health and Human Services	2000 Series I	2005 Series IIR	11/30/2035	\$1,340,000	\$15,312,600
College of Business Building	1990 Series I	1993 Series I	8/31/1993	\$2,400,000	\$19,500,000
<b>Eastern Michigan Total</b>					<b>\$96,893,920</b>
Ferris State	Bond Issue	Refunding Issue(s)	Lease End Date	Rental Payment	SBA Project Cost
Library Addition and Renovation (Phase II )	2002 Series II	2003 Series II	12/1/2003	\$700,000	\$48,224,900
Library Addition and Renovation (Phase I)	2001 Series II	2005 Series I	10/31/2036	\$2,625,000	\$29,624,900
Occupational Education Building	1990 Series I	1993 Series I	8/31/1993	\$800,000	\$7,000,000
Heavy Equip Tech Building	1987 Series I	1991 Series I/2001 Series I	7/12/2001	\$825,000	\$5,700,000
Elastomer Institute	1999 Series I	2005 Series I	5/26/2005	\$423,000	\$4,649,900
School of Technology Buildings	1988 Series I	1991 Series I/2001 Series I	7/12/2001	\$660,000	\$5,100,000
Engineering and Technology Center	2005 Series I	2006 Series IR	12/31/2039	\$1,070,000	\$13,499,800
Arts and Sciences Complex	1997 Series II	2003 Series IR/2006 Series IR	8/6/2006	\$2,956,000	\$30,690,000
<b>Ferris State Total</b>					<b>\$144,489,500</b>

## SBA Bonded Projects

<b>Grand Valley</b>	<b>Bond Issue</b>	<b>Refunding Issue(s)</b>	<b>Lease End Date</b>	<b>Rental Payment</b>	<b>SBA Project Cost</b>
Grand Rapids Center	1987 Series I	1991 Series I	12/27/1991	\$2,290,000	\$16,100,000
School of Business and Graduate Library	2000 Series I	2005 Series IIR	11/30/2035	\$3,320,000	\$37,524,900
Physical Education Facility	1982 Series I	1986 Series III/1991 Series I	12/27/1991	\$2,024,000	\$10,780,000
Life Sciences Building	1996 Series I	2003 Series IR/2006 Series IR	8/6/2006	\$4,402,000	\$39,501,000
Health Professions	2003 Series II	2005 Series IIR	12/21/2005	\$3,210,000	\$37,099,800
<b>Grand Valley Total</b>					<b>\$141,005,700</b>
<b>Lake Superior State</b>	<b>Bond Issue</b>	<b>Refunding Issue(s)</b>	<b>Lease End Date</b>	<b>Rental Payment</b>	<b>SBA Project Cost</b>
Library Addition	1997 Series I	2003 Series IR	7/30/2003	\$1,204,000	\$10,810,000
Crawford Hall Addition	2000 Series I	2005 Series IIR	10/26/2005	\$1,530,000	\$17,249,900
Arts Classroom Building	2005 Series I	2006 Series IR	12/31/2039	\$910,000	\$11,474,800
Vocational Technology Building	1979 Series I		10/1/1991	\$638,957	\$5,540,000
<b>Lake Superior State Total</b>					<b>\$45,074,700</b>
<b>Michigan State</b>	<b>Bond Issue</b>	<b>Refunding Issue(s)</b>	<b>Lease End Date</b>	<b>Rental Payment</b>	<b>SBA Project Cost</b>
Crop and Soil Sciences Research Facility	1997 Series II	2003 Series IR	7/30/2003	\$280,000	\$3,069,000
Bio-Physical Sciences Building	2002 Series I	2003 Series II/2006 Series IR	3/31/2037	\$6,180,000	\$69,749,900
Agriculture and Livestock Education Center	1997 Series I	2003 Series IR/2006 Series IR	8/6/2006	\$1,840,000	\$16,673,000
Engineering Building	1988 Series I	1991 Series I/2001 Series I	7/12/2001	\$4,960,000	\$34,400,000
Anthony Hall, Dairy Plant, and Meats Lab	1997 Series II	2003 Series IR/2006 Series IR	10/31/2032	\$3,920,000	\$39,976,900
Animal Health Diagnostic Lab	2005 Series IIA	2006 Series IR	10/31/2040	\$4,459,000	\$57,999,900
Infectious Disease Containment Facility	1996 Series I	2003 Series IR	7/30/2003	\$363,000	\$3,521,000
Veterinary Clinical Center	1990 Series I	1993 Series I	8/31/1993	\$3,700,000	\$29,800,000
Equine Teaching and Research Center	1996 Series I	2003 Series IR	7/30/2003	\$128,000	\$1,233,000
Power Plant Addition	1992 Series I	1998 Series I	12/17/1998	\$6,836,229	\$61,544,000
Farm Buildings	1998 Series I	2003 Series IR	7/30/2003	\$473,000	\$5,247,000
Plant and Soil Sciences	1984 Series I	1991 Series I	12/27/1991	\$4,372,788	\$21,871,650

## SBA Bonded Projects

			<b>Michigan State Total</b>		<b>\$345,085,350</b>
<b>Michigan Tech</b>	<b>Bond Issue</b>	<b>Refunding Issue(s)</b>	<b>Lease End Date</b>	<b>Rental Payment</b>	<b>SBA Project Cost</b>
Environmental Sciences	1999 Series I	2005 Series I	4/30/2034	\$2,915,000	\$29,999,900
Minerals and Materials Engineering Building	1990 Series I	1993 Series I	1/1/2015	\$3,400,000	\$27,000,000
Performing Arts Center	2001 Series I	2005 Series I	2/28/2036	\$461,000	\$4,999,900
Center of Integrated Learning and Information Technology	2005 Series IIA	2006 Series IR	10/31/2040	\$1,922,000	\$24,999,800
Student Development Complex	1979 Series I		10/1/1991	\$1,916,197	\$17,860,000
Ecosystem Science Project	2001 Series I	2005 Series I	5/26/2005	\$692,000	\$7,499,900
			<b>Michigan Tech Total</b>		<b>\$112,359,500</b>
<b>Northern Michigan</b>	<b>Bond Issue</b>	<b>Refunding Issue(s)</b>	<b>Lease End Date</b>	<b>Rental Payment</b>	<b>SBA Project Cost</b>
Vocational Skills Center	1979 Series I		10/1/1991	\$1,760,530	\$16,560,000
Heating Plant Addition	1997 Series I	2003 Series IR/2006 Series IR	1/31/2032	\$2,123,000	\$19,334,700
Great Lakes Training Complex	1992 Series I	1998 Series I	12/17/1998	\$2,140,694	\$20,800,000
Fine and Practical Arts Project	2005 Series IIA	2006 Series IR	10/31/2040	\$1,224,000	\$15,922,300
Student Services Building	2005 Series IIA	2006 Series IR	10/31/2040	\$908,000	\$11,812,300
Seaborg Science Building Renovations (Phase II)	2001 Series II	2005 Series I	10/31/2036	\$1,290,000	\$14,555,921
Seaborg Science Building Renovations (Phase I)	2001 Series I	2005 Series I	2/28/2036	\$1,905,000	\$20,645,179
			<b>Northern Michigan Total</b>		<b>\$119,630,400</b>
<b>Oakland</b>	<b>Bond Issue</b>	<b>Refunding Issue(s)</b>	<b>Lease End Date</b>	<b>Rental Payment</b>	<b>SBA Project Cost</b>
School of Education and Human Services Building	2002 Series IIIIR	2006 Series IR	11/30/2037	\$2,095,000	\$23,624,800
Kresge Library Addition	1988 Series I	1991 Series I/2001 Series I	7/12/2001	\$620,000	\$4,700,000
Classroom/Business School Office Building	2001 Series I	2005 Series I	2/28/2036	\$1,211,000	\$13,124,900
Science and Technology Building	1997 Series II	2003 Series IR/2006 Series IR	10/31/2032	\$3,820,000	\$38,621,800
Classroom Office Building	1979 Series I		10/1/1991	\$931,668	\$8,685,000
			<b>Oakland Total</b>		<b>\$88,756,500</b>

## SBA Bonded Projects

<b>Saginaw Valley</b>	<b>Bond Issue</b>	<b>Refunding Issue(s)</b>	<b>Lease End Date</b>	<b>Rental Payment</b>	<b>SBA Project Cost</b>
Classroom Facility	2001 Series II	2005 Series I	10/31/2036	\$1,662,000	\$18,749,900
Instructional Facility (Phase IV) and Library Renovation	2005 Series I	2006 Series IR	12/31/2039	\$2,375,000	\$29,999,800
Wickes Hall	1988 Series I	1991 Series I/2001 Series I	7/12/2001	\$510,000	\$4,072,200
Physical Education Building	1988 Series I	1991 Series I/2001 Series I	7/12/2001	\$2,160,000	\$15,900,000
Instructional Facility (Phase II)	1984 Series I	1991 Series I	12/27/1991	\$3,781,584	\$15,600,000
Business and Professional Development Center	1997 Series II	1998 Series I/2003 Series IR	10/31/2032	\$3,153,000	\$33,499,000

**Saginaw Valley Total** **\$117,820,900**

<b>University of Michigan- Ann Arbor</b>	<b>Bond Issue</b>	<b>Refunding Issue(s)</b>	<b>Lease End Date</b>	<b>Rental Payment</b>	<b>SBA Project Cost</b>
Engineering Center Building	1996 Series I	2003 Series IR	7/30/2003	\$1,790,000	\$16,335,000
Natural Science Building	1990 Series I	1993 Series I	8/31/1993	\$900,000	\$8,000,000
Adult General Hospital	1982 Series III	1986 Series I/1993 Series I	10/1/2004	\$27,917,000	\$119,590,000
Natural Resources	2003 Series II	2006 Series IR	10/31/2038	\$975,000	\$11,249,900
Perry Building	2003 Series II	2006 Series IR	10/31/2038	\$780,000	\$8,999,900
Integrated Technology Center	1996 Series I	2003 Series I/2006 Series IR	8/6/2006	\$4,402,000	\$40,095,000
West Hall	2005 Series I	2006 Series IR	12/31/2039	\$730,000	\$9,230,769
Medical Campus Library	1979 Series I		10/1/1991	\$521,224	\$4,700,000
Clarence Cook Little Science Building Renovation	1997 Series I	2003 Series IR/2006 Series IR	1/31/2032	\$1,919,000	\$16,335,000
Angell Hall Renovation	1997 Series I	2003 Series IR	7/30/2003	\$1,880,000	\$15,840,000
Chemistry Building	1987 Series I	1991 Series I	12/27/1991	\$4,285,000	\$24,000,000
Mason Hall and Haven Hall	2005 Series IIA	2006 Series IR	10/31/2040	\$2,018,000	\$26,250,000
Engineering Building (Phase I)	1984 Series I	1991 Series I	12/27/1991	\$5,591,340	\$26,510,000

**University of Michigan- Ann Arbor Total** **\$327,135,569**

<b>University of Michigan- Dearborn</b>	<b>Bond Issue</b>	<b>Refunding Issue(s)</b>	<b>Lease End Date</b>	<b>Rental Payment</b>	<b>SBA Project Cost</b>
Campus Renovations (Phase I)	1992 Series IIA	1998 Series I	12/17/1998	\$1,051,822	\$10,220,000
EIC Building (Phase III)	2001 Series II	2005 Series I	10/31/2036	\$270,000	\$3,046,500
Hubbard Drive	2005 Series I	2006 Series IR	12/31/2039	\$1,950,000	\$24,599,800

## SBA Bonded Projects

University Mall	2005 Series I	2006 Series IR	12/31/2039	\$775,000	\$9,778,500
Library Project	1979 Series I		10/1/1991	\$909,540	\$8,250,000
CASL Building (Phase III)	2001 Series II	2005 Series I	10/31/2036	\$1,981,000	\$22,349,900
Campus Renovations (Phase II)	1997 Series I	2003 Series IR	7/30/2003	\$1,514,000	\$13,860,000

**University of Michigan- Dearborn Total** **\$92,104,700**

<b>University of Michigan- Flint</b>	<b>Bond Issue</b>	<b>Refunding Issue(s)</b>	<b>Lease End Date</b>	<b>Rental Payment</b>	<b>SBA Project Cost</b>
Water Street Condo Facility	1992 Series I	1998 Series I	12/17/1998	\$195,441	\$1,899,000
Classroom/Lab Building	1987 Series I	1991 Series I	12/27/1991	\$3,515,000	\$20,000,000
Professional Studies and Classroom Building	2002 Series I	2003 Series II/2006 Series IR	3/31/2037	\$2,300,000	\$25,942,100

**University of Michigan- Flint Total** **\$47,841,100**

<b>Wayne State</b>	<b>Bond Issue</b>	<b>Refunding Issue(s)</b>	<b>Lease End Date</b>	<b>Rental Payment</b>	<b>SBA Project Cost</b>
Engineering Building (WSU)	1984 Series I	1991 Series I	12/27/1991	\$1,630,092	\$8,887,000
Welcome Center	2002 Series IIIIR	2006 Series IR	11/30/2037	\$1,230,000	\$13,874,800
Pharmacy Building Replacement	2002 Series II	2003 Series II/2006 Series IR	8/31/2037	\$4,270,000	\$48,224,900
Undergraduate Library	1998 Series I	2003 Series IR/2006 Series IR	1/31/2033	\$2,273,000	\$25,999,900
Science Hall	1992 Series IIB		10/1/1997	\$668,967	\$6,500,000
Faculty and Administration Building	1990 Series I	1993 Series I	8/31/1993	\$900,000	\$8,000,000
Biological Sciences Building	1992 Series IIA	1998 Series I	12/17/1998	\$1,842,232	\$17,900,000
Old Main Building Renovation	1997 Series II	2003 Series IR/2006 Series IR	10/31/2032	\$4,040,000	\$42,426,600

**Wayne State Total** **\$171,813,200**

<b>Western Michigan</b>	<b>Bond Issue</b>	<b>Refunding Issue(s)</b>	<b>Lease End Date</b>	<b>Rental Payment</b>	<b>SBA Project Cost</b>
Lake Michigan College SW Center	2002 Series IIIIR	2006 Series IR	11/30/2037	\$565,000	\$6,364,300
Waldo Library	1990 Series I	1993 Series I	8/31/1993	\$1,500,000	\$12,000,000
Science Facility (WMU)	1999 Series I	2005 Series I	4/30/2034	\$3,540,000	\$37,620,000
Power Plant Renovation	1998 Series I	2003 Series IR/2006 Series IR	9/30/2032	\$1,982,000	\$22,667,000
Fine Arts Building	1982 Series I	1986 Series III/1991 Series I	12/27/1991	\$2,367,000	\$12,491,427

## SBA Bonded Projects

College of Business	1990 Series I	1993 Series I	8/31/1993	\$1,200,000	\$9,700,000
Engineering and Applied Sciences	2005 Series I	2006 Series IR	12/31/2039	\$2,970,000	\$37,499,900
Health and Human Services Building	2005 Series IIA	2006 Series IR	10/31/2040	\$2,777,000	\$36,127,900
<b>Western Michigan Total</b>					<b>\$174,470,527</b>
<b>Universities Total</b>					<b>\$2,151,852,266</b>

## SBA Bonded Projects

### Community Colleges

<b>Alpena</b>	<b>Bond Issue</b>	<b>Refunding Issue(s)</b>	<b>Lease End Date</b>	<b>Rental Payment</b>	<b>SBA Project Cost</b>
Student Business Learning Resource Center	1997 Series I	2003 Series IR	7/30/2003	\$461,000	\$4,099,000
Concrete Technology Center	2000 Series I	2005 Series IIR	11/30/2035	\$300,000	\$3,359,900
<b>Alpena Total</b>					<b>\$7,458,900</b>
<b>Bay de Noc</b>	<b>Bond Issue</b>	<b>Refunding Issue(s)</b>	<b>Lease End Date</b>	<b>Rental Payment</b>	<b>SBA Project Cost</b>
General Campus Renovations (Bay de Noc)	2000 VR Notes	2001 Series I	12/1/2034	\$162,000	\$1,857,400
Business Technology Center	1997 Series II	2003 Series IR	7/30/2003	\$219,000	\$2,499,900
<b>Bay de Noc Total</b>					<b>\$4,357,300</b>
<b>Delta</b>	<b>Bond Issue</b>	<b>Refunding Issue(s)</b>	<b>Lease End Date</b>	<b>Rental Payment</b>	<b>SBA Project Cost</b>
Science and Learning	2000 VR Notes	2001 Series I	12/1/2034	\$1,200,000	\$12,499,900
General Campus Renovations (Delta)	2005 Series I	2006 Series IR	12/31/2039	\$1,410,000	\$17,819,800
<b>Delta Total</b>					<b>\$30,319,700</b>
<b>Glen Oaks</b>	<b>Bond Issue</b>	<b>Refunding Issue(s)</b>	<b>Lease End Date</b>	<b>Rental Payment</b>	<b>SBA Project Cost</b>
Business Development Center	1994 Series I	2002 Series IIIR	12/5/2002	\$235,000	\$2,300,500
<b>Glen Oaks Total</b>					<b>\$2,300,500</b>
<b>Gogebic</b>	<b>Bond Issue</b>	<b>Refunding Issue(s)</b>	<b>Lease End Date</b>	<b>Rental Payment</b>	<b>SBA Project Cost</b>
Center for Business Education	1992 Series I	1998 Series I	12/17/1998	\$138,939	\$1,350,000
General Campus Renovations (Gogebic)	2002 Series II	2003 Series II/2006 Series IR	8/31/2037	\$60,000	\$699,800
<b>Gogebic Total</b>					<b>\$2,049,800</b>
<b>Grand Rapids</b>	<b>Bond Issue</b>	<b>Refunding Issue(s)</b>	<b>Lease End Date</b>	<b>Rental Payment</b>	<b>SBA Project Cost</b>
Science Facility	2000 VR Notes	2001 Series I	12/1/2034	\$1,410,000	\$15,040,300

## SBA Bonded Projects

Main Building Renovations	2002 Series I	2003 Series II/2006 Series IR	3/31/2037	\$265,000	\$2,999,800
<b>Grand Rapids Total</b>					<b>\$18,040,100</b>
<b>Henry Ford</b>	<b>Bond Issue</b>	<b>Refunding Issue(s)</b>	<b>Lease End Date</b>	<b>Rental Payment</b>	<b>SBA Project Cost</b>
Patterson Technology Center	1996 Series I	2003 Series IR	7/30/2003	\$704,000	\$5,213,540
Health Careers Center	1997 Series II	2003 Series IR	7/30/2003	\$471,000	\$4,956,100
Instructional/Classroom Renovations	2002 Series IIIR	2006 Series IR	11/30/2037	\$435,000	\$4,927,800
Learning Resources Center	1997 Series II	2003 Series IR	7/30/2003	\$510,000	\$5,492,200
<b>Henry Ford Total</b>					<b>\$20,589,640</b>
<b>Jackson</b>	<b>Bond Issue</b>	<b>Refunding Issue(s)</b>	<b>Lease End Date</b>	<b>Rental Payment</b>	<b>SBA Project Cost</b>
Lenawee Extension Center	2005 Series I	2006 Series IR	12/31/2039	\$120,000	\$1,499,900
<b>Jackson Total</b>					<b>\$1,499,900</b>
<b>Kalamazoo Valley</b>	<b>Bond Issue</b>	<b>Refunding Issue(s)</b>	<b>Lease End Date</b>	<b>Rental Payment</b>	<b>SBA Project Cost</b>
Arcadia Commons Campus (Phase I)	2001 Series II	2005 Series I	10/31/2036	\$993,000	\$11,199,900
Arcadia Commons Campus (Phase I and II)	1994 Series II	2002 Series IIIR	12/5/2002	\$680,000	\$6,499,000
<b>Kalamazoo Valley Total</b>					<b>\$17,698,900</b>
<b>Kellogg</b>	<b>Bond Issue</b>	<b>Refunding Issue(s)</b>	<b>Lease End Date</b>	<b>Rental Payment</b>	<b>SBA Project Cost</b>
Career Development Center/Science Building Renovation	2005 Series I	2006 Series IR	8/6/2006	\$150,000	\$1,874,800
Computer Technology	2003 Series II	2006 Series IR	10/31/2038	\$520,000	\$5,999,900
Roll Building Renovation	2005 Series IIA	2006 Series IR	8/6/2006	\$125,000	\$1,624,800
<b>Kellogg Total</b>					<b>\$9,499,500</b>
<b>Kirtland</b>	<b>Bond Issue</b>	<b>Refunding Issue(s)</b>	<b>Lease End Date</b>	<b>Rental Payment</b>	<b>SBA Project Cost</b>
Academic Building	2000 VR Notes	2001 Series I	8/1/2034	\$318,000	\$3,616,900
<b>Kirtland Total</b>					<b>\$3,616,900</b>

## SBA Bonded Projects

Lake Michigan	Bond Issue	Refunding Issue(s)	Lease End Date	Rental Payment	SBA Project Cost
Institute of Business and Technology	1992 Series IIA	1998 Series I	10/1/2027	\$475,893	\$4,624,000
South Campus Center	1999 Series I	2005 Series I	5/26/2005	\$217,000	\$2,380,500
Van Buren Center	2003 Series II	2006 Series IR	10/31/2038	\$340,000	\$3,899,800
Student Service Center	2001 Series I	2005 Series I	5/26/2005	\$185,000	\$2,000,000
<b>Lake Michigan Total</b>					<b>\$12,904,300</b>
Lansing	Bond Issue	Refunding Issue(s)	Lease End Date	Rental Payment	SBA Project Cost
Academic Services	1998 Series I	2003 Series IR	7/30/2003	\$1,140,000	\$12,784,900
<b>Lansing Total</b>					<b>\$12,784,900</b>
Macomb	Bond Issue	Refunding Issue(s)	Lease End Date	Rental Payment	SBA Project Cost
General Classroom Building	1997 Series I	2003 Series IR	7/30/2003	\$494,000	\$4,449,900
University Center	2001 Series I	2005 Series I	2/28/2036	\$600,000	\$6,499,900
<b>Macomb Total</b>					<b>\$10,949,800</b>
Mid Michigan	Bond Issue	Refunding Issue(s)	Lease End Date	Rental Payment	SBA Project Cost
Mt. Pleasant Campus	1997 Series I	2003 Series IR	7/30/2003	\$182,000	\$1,674,500
Student Assessment Center	2005 Series IIA	2006 Series IR	10/31/2040	\$122,000	\$1,582,300
Instructional Center	1999 Series I	2005 Series I	4/30/2034	\$160,000	\$1,749,500
<b>Mid Michigan Total</b>					<b>\$5,006,300</b>
Monroe	Bond Issue	Refunding Issue(s)	Lease End Date	Rental Payment	SBA Project Cost
Instructional Center, Business Training and Performing Arts	2005 Series I	2006 Series IR	12/31/2039	\$475,000	\$5,999,800
Health Education Building	1997 Series II	2003 Series IR	7/30/2003	\$321,000	\$3,449,900
Business and Technical Center, Library, Welding	2001 Series I	2005 Series I	2/28/2036	\$115,000	\$1,249,800
<b>Monroe Total</b>					<b>\$10,699,500</b>

## SBA Bonded Projects

<b>Montcalm</b>	<b>Bond Issue</b>	<b>Refunding Issue(s)</b>	<b>Lease End Date</b>	<b>Rental Payment</b>	<b>SBA Project Cost</b>
Vocational/Technical Facility	2000 VR Notes	2001 Series I	12/1/2034	\$525,000	\$5,699,900
<b>Montcalm Total</b>					<b>\$5,699,900</b>
<b>Mott</b>	<b>Bond Issue</b>	<b>Refunding Issue(s)</b>	<b>Lease End Date</b>	<b>Rental Payment</b>	<b>SBA Project Cost</b>
Campus Renovations (Phase I) (Mott)	1994 Series I	2002 Series IIIR	12/5/2002	\$120,000	\$1,187,672
Gorman Building Renovations (Phase II)	1997 Series I	2003 Series IR	7/30/2003	\$314,000	\$2,862,328
Regional Technical Center	2002 Series II	2003 Series II/2006 Series IR	8/31/2037	\$1,480,000	\$16,719,400
<b>Mott Total</b>					<b>\$20,769,400</b>
<b>Muskegon</b>	<b>Bond Issue</b>	<b>Refunding Issue(s)</b>	<b>Lease End Date</b>	<b>Rental Payment</b>	<b>SBA Project Cost</b>
Center for Higher Education	1994 Series II	2002 Series IIIR	12/5/2002	\$1,030,000	\$9,099,000
<b>Muskegon Total</b>					<b>\$9,099,000</b>
<b>North Central Michigan</b>	<b>Bond Issue</b>	<b>Refunding Issue(s)</b>	<b>Lease End Date</b>	<b>Rental Payment</b>	<b>SBA Project Cost</b>
Multipurpose Educational Facility and General Campus Ren	2001 Series II	2005 Series I	10/31/2036	\$352,000	\$3,967,400
<b>North Central Michigan Total</b>					<b>\$3,967,400</b>
<b>Northwestern Michigan</b>	<b>Bond Issue</b>	<b>Refunding Issue(s)</b>	<b>Lease End Date</b>	<b>Rental Payment</b>	<b>SBA Project Cost</b>
University Center (Northwestern)	1997 Series I	2003 Series IR	7/30/2003	\$250,000	\$2,399,900
Integrated Science	2003 Series II	2006 Series IR	10/31/2038	\$610,000	\$7,049,900
West Bay	2005 Series I	2006 Series IR	12/31/2039	\$645,000	\$8,124,000
<b>Northwestern Michigan Total</b>					<b>\$17,573,800</b>
<b>Oakland (CC)</b>	<b>Bond Issue</b>	<b>Refunding Issue(s)</b>	<b>Lease End Date</b>	<b>Rental Payment</b>	<b>SBA Project Cost</b>
Building F Renovation	1999 Series I	2005 Series I	1/31/2034	\$465,000	\$5,249,900
<b>Oakland (CC) Total</b>					<b>\$5,249,900</b>

## SBA Bonded Projects

Schoolcraft	Bond Issue	Refunding Issue(s)	Lease End Date	Rental Payment	SBA Project Cost
Business and Industry Training Center	2003 Series II	2006 Series IR	10/31/2038	\$1,160,000	\$13,368,800
Student Services Building (Schoolcraft)	1994 Series II	2002 Series IIIR	12/5/2002	\$405,000	\$3,922,000
<b>Schoolcraft Total</b>					<b>\$17,290,800</b>
Southwestern Michigan	Bond Issue	Refunding Issue(s)	Lease End Date	Rental Payment	SBA Project Cost
Business Development Center (Southwestern)	1997 Series I	2003 Series IR	7/30/2003	\$279,000	\$2,499,900
Instructional Resource	2003 Series II	2006 Series IR	10/31/2038	\$110,000	\$1,249,800
South County Extension	2000 VR Notes	2001 Series I	8/1/2034	\$120,500	\$1,369,900
<b>Southwestern Michigan Total</b>					<b>\$5,119,600</b>
Washtenaw	Bond Issue	Refunding Issue(s)	Lease End Date	Rental Payment	SBA Project Cost
Business Education Center	1997 Series I	2003 Series IR	7/30/2003	\$329,000	\$2,999,900
Technology Education Building	2002 Series II	2003 Series II/2006 Series IR	8/31/2037	\$930,000	\$10,499,900
Plumbers and Pipefitters	2005 Series I	2006 Series IR	12/31/2039	\$160,000	\$1,999,800
<b>Washtenaw Total</b>					<b>\$15,499,600</b>
West Shore	Bond Issue	Refunding Issue(s)	Lease End Date	Rental Payment	SBA Project Cost
Technical Center (Phase III)	1994 Series I	2002 Series IIIR	12/5/2002	\$110,000	\$396,000
<b>West Shore Total</b>					<b>\$396,000</b>
<b>Community Colleges Total</b>					<b>\$270,441,340</b>

## SBA Bonded Projects

### Corrections

	Bond Issue	Refunding Issue(s)	Lease End Date	Rental Payment	SBA Project Cost
St. Louis Facility	2000 VR Notes	2001 Series I	12/1/2034	\$7,140,000	\$74,250,000
Manistee Close Custody Facility (Oaks)	1991 Series II	2001 Series I	12/1/2026	\$4,237,000	\$38,100,000
Macomb Regional Prison	1991 Series II	2001 Series I	12/1/2026	\$4,685,000	\$41,400,000
Lapeer Regional Prison	1987 Series II	1991 Series I/2001 Series I	7/12/2001	\$3,800,000	\$30,800,000
Lakeland Additional Housing Units	1997 Series I	2003 Series IR	7/30/2003	\$783,000	\$7,429,000
Jackson Regional Prison	1987 Series II	1991 Series I/2001 Series I	7/12/2001	\$3,760,000	\$30,500,000
Jackson Parole Camp	1997 Series II	2003 Series IR	7/30/2003	\$950,000	\$9,140,000
Iron County Minimum Security Camp (Camp Ottawa)	1991 Series II	2001 Series I	12/1/2026	\$475,000	\$4,150,000
Ionia Maximum Security Prison	1987 Series II	1991 Series I/2001 Series I	7/12/2001	\$4,030,000	\$32,700,000
IMAX Riverside Correctional Facility	1997 Series I	2003 Series IR	7/30/2003	\$238,000	\$2,263,200
Adrian Regional Correctional Facility	1990 Series II	1998 Series I	1/1/2026	\$5,832,779	\$55,426,633
Houghton County Minimum Security Camp	1991 Series II	2001 Series I	12/1/2026	\$563,000	\$5,050,000
Newberry Mental Health Facility Conversion	1997 Series I	2003 Series IR	7/30/2003	\$1,050,000	\$10,096,100
Detroit Regional Prison	1989 Series I	1991 Series I/2003 Series I/2006 Series I	8/6/2006	\$10,674,000	\$89,000,000
Chippewa Correctional Facilities	1989 Series I	1991 Series I/2003 Series I/2006 Series I	8/6/2006	\$5,953,000	\$52,300,000
Carson City Regional Prison	1988 Series II	1993 Series I	8/31/1993	\$4,980,000	\$36,000,000
Camp Shawano	Escrow Restructuring			\$0	\$3,600,000
Camp Nokomis	1994 Series II	2002 Series IIR	12/5/2002	\$365,000	\$3,500,000
Baraga Max Security Correction Facility	1991 Series II	2001 Series I	12/1/2026	\$4,205,000	\$37,500,000
Baraga Additional Housing Units	1997 Series II	2003 Series IR	7/30/2003	\$772,000	\$8,397,900
Alger Correctional Facility	1990 Series II	1998 Series I	1/1/2026	\$4,297,867	\$42,387,781
Alger Additional Housing Units	1997 Series II	2003 Series IR	7/30/2003	\$399,000	\$4,349,000
Huron Valley Women's Correctional Facility	1988 Series II	1993 Series I	8/31/1993	\$450,000	\$3,430,000
Ypsilanti Correctional Facility	1979 Series I		10/1/1991	\$2,193,283	\$19,925,000
Florence Crane Additional Housing Units	2000 Series I	2005 Series IIR	11/30/2035	\$400,000	\$4,525,000
Baraga Additional Housing Units II	2000 Series I	2005 Series IIR	11/30/2035	\$305,000	\$3,460,000
Parnall Correctional Facility	2002 Series II	2003 Series II	12/1/2003	\$440,000	\$4,960,000

## SBA Bonded Projects

Multilevel Correctional Facility at Ionia	2002 Series I	2003 Series II	12/1/2003	\$5,190,000	\$58,579,900
Cooper Street Additional Housing Units #1,2,3	2001 Series II	2005 Series I	5/26/2005	\$787,000	\$8,700,000
Camp Ojibway Additional Housing Units	2001 Series I	2005 Series I	5/26/2005	\$69,200	\$20,645,179
Saginaw Additional Housing Units	2001 Series I	2005 Series I	5/26/2005	\$851,000	\$9,227,000
Macomb Additional Housing Units	2001 Series I	2005 Series I	5/26/2005	\$874,000	\$9,477,000
Pugsley Additional Housing Units	2001 Series I	2005 Series I	5/26/2005	\$1,875,000	\$20,320
Mid Michigan Temp Facility (St. Louis)	1990 Series II	1998 Series I	12/17/1998	\$1,166,935	\$11,012,257
Ypsilanti Correctional Facility (Phase IV)	1982 Series II		10/1/1991	\$435,000	\$2,540,000
Muskegon Regional Prison	1988 Series II	1993 Series I	8/31/1993	\$4,980,000	\$36,000,000
Western Wayne Correctional Facility	1990 Series II	1998 Series I	12/21/2005	\$3,098,993	\$30,456,746
Upper Peninsula Detention Center	1994 Series II	2002 Series IIIR	12/5/2002	\$440,000	\$4,212,500
Standish Additional Housing Units	1997 Series I	2003 Series IR/2006 Series IR	8/6/2006	\$465,000	\$4,360,000
Standish Correctional Facility	1990 Series II	1998 Series I	12/17/1998	\$3,956,894	\$38,946,152
SPSM Reorganization (Phase II)	2000 Series I	2005 Series IIR	10/26/2005	\$3,195,000	\$36,600,000
SPSM Reorganization (Phase I)	1997 Series II	2003 Series IR/2006 Series IR	10/31/2032	\$7,660,000	\$73,500,000
Schoolcraft County Minimum Security Camp	1991 Series II	2001 Series I	12/1/2026	\$420,000	\$3,750,000
Saginaw Regional Correctional Facility	1991 Series II	2001 Series I	12/1/2026	\$3,920,000	\$35,100,000
Oaks Additional Housing Units	1997 Series II	2003 Series IR	7/30/2003	\$738,000	\$8,032,200
St. Louis Correctional Facility Level I	2000 Series I	2005 Series IIR	11/30/2035	\$1,895,000	\$21,700,000
Thumb Additional Housing Units	2001 Series I	2005 Series I	5/26/2005	\$735,000	\$7,972,000

**Corrections Total**

**\$1,075,470,868**

## SBA Bonded Projects

### Other State Agencies

<b>Agriculture</b>	<b>Bond Issue</b>	<b>Refunding Issue(s)</b>	<b>Lease End Date</b>	<b>Rental Payme</b>	<b>SBA Project Cost</b>
Geagley Lab	2002 Series II	2003 Series II/2006 Series IR	8/6/2006	\$1,050,000	\$11,900,000
<b>Agriculture Total</b>					<b>\$11,900,000</b>

<b>Community Health</b>	<b>Bond Issue</b>	<b>Refunding Issue(s)</b>	<b>Lease End Date</b>	<b>Rental Payme</b>	<b>SBA Project Cost</b>
Forensic Psychiatry Center	2005 Series IIA	2006 Series IR	10/31/2040	\$8,449,000	\$109,899,900
Fairlawn Center	1992 Series I	1998 Series I	12/17/1998	\$463,131	\$4,500,000
Walter Reuther Psychiatric Hospital Power Plant	1992 Series I	1998 Series I	12/17/1998	\$194,225	\$1,799,000
Walter Reuther Psychiatric Hospital Facility	1982 Series II		10/1/1991	\$2,482,000	\$14,364,400
State Psychiatric Hospital	1994 Series I	2002 Series IIIR	12/5/2002	\$3,200,000	\$29,999,000
<b>Community Health Total</b>					<b>\$160,562,300</b>

<b>Education</b>	<b>Bond Issue</b>	<b>Refunding Issue(s)</b>	<b>Lease End Date</b>	<b>Rental Payme</b>	<b>SBA Project Cost</b>
School for Deaf and Blind	2000 VR Notes	2001 Series I	8/1/2034	\$130,000	\$1,485,000
<b>Education Total</b>					<b>\$1,485,000</b>

<b>Human Services</b>	<b>Bond Issue</b>	<b>Refunding Issue(s)</b>	<b>Lease End Date</b>	<b>Rental Payme</b>	<b>SBA Project Cost</b>
W.J. Maxey Boys Training School	2001 Series II	2005 Series I	5/26/2005	\$3,307,000	\$37,231,000
<b>Human Services Total</b>					<b>\$37,231,000</b>

<b>Management and Budget</b>	<b>Bond Issue</b>	<b>Refunding Issue(s)</b>	<b>Lease End Date</b>	<b>Rental Payme</b>	<b>SBA Project Cost</b>
Lottery Building	1991 Series II	2001 Series I	12/1/2026	\$1,520,000	\$13,700,000
State Capital Restoration (Phase I and II)	1992 Series I	1998 Series I	8/1/2027	\$6,404,274	\$61,473,600
Allegan Street Parking Ramp	1997 Series II	2003 Series IR/2006 Series IR	8/6/2006	\$1,994,000	\$20,790,000
Olds Plaza (Romney Building)	1990 Series II	1998 Series I	1/1/2026	\$2,282,097	\$23,209,155
State Library Museum and Archives Facility	1986 Series II	1991 Series I	12/27/1991	\$5,290,716	\$28,900,000

## SBA Bonded Projects

Jackson State Office Building	1982 Series I	1986 Series III/1991 Series I	12/27/1991	\$872,000	\$5,166,000
Flint Water Street Parking Condo	1985 Series I		1/1/1996	\$717,384	\$3,621,000
Flint State Office Building	1982 Series I	1986 Series III/1991 Series I/2001 Series I	7/12/2001	\$1,365,000	\$8,076,000
Ottawa Street State Office Buildings	1982 Series I	1986 Series III/1991 Series I	12/27/1991	\$6,222,000	\$34,027,000
Secondary Complex Warehouse	2002 Series IIIIR	2006 Series IR	11/30/2037	\$3,990,000	\$44,999,900
Constitution Hall	2005 Series IIR		10/31/2040	\$0	\$122,363,190
Grand Tower	2002 Series II	2003 Series II	12/1/2003	\$3,810,000	\$42,988,000
Hall of Justice	2002 Series IIIIR	2006 Series IR	11/30/2037	\$7,780,000	\$87,799,900
Saginaw State Office Building	1982 Series I	1986 Series III/1991 Series I/2001 Series I	5/1/2002	\$1,267,000	\$7,140,000
Roosevelt Parking Facility	2005 Series IIA	2006 Series IR	8/6/2006	\$507,000	\$6,506,400

**Management and Budget Total** **\$510,760,145**

Michigan State Police	Bond Issue	Refunding Issue(s)	Lease End Date	Rental Payme	SBA Project Cost
MSP Radio System (Phase V)	2004 MSP V		5/31/2019	\$4,435,000	\$155,350,000
MSP Radio System (Phase IV)	2002 MSP IV	2004 MSP V	5/27/2004	\$4,305,000	\$34,900,000
Oak Park Project	1997 Series II	2003 Series IR	7/30/2003	\$159,000	\$1,736,500
Taylor Project	1997 Series II	2003 Series IR	7/30/2003	\$233,000	\$2,556,500
MSP Radio System (Phase I)	1997 Series A	2004 MSP V	5/27/2004	\$4,710,000	\$33,384,477
MSP Radio System (Phase II)	2000 MSP II		5/31/2019	\$5,868,000	\$42,660,800
MSP Radio System (Phase III)	2001 MSP III		5/31/2019	\$6,726,996	\$58,215,000
State Police Crime Lab	2001 Series II	2005 Series I	5/26/2005	\$2,074,000	\$23,325,000
Monroe Project	Escrow Restructuring			\$0	\$1,440,000

**Michigan State Police Total** **\$353,568,277**

Natural Resources	Bond Issue	Refunding Issue(s)	Lease End Date	Rental Payme	SBA Project Cost
State Fish Hatchery Renovations Oden Project	2002 Series I	2003 Series II	12/1/2003	\$1,060,000	\$11,801,000
State Fish Hatchery Renovations Platte River	2005 Series I	2006 Series IR	12/31/2039	\$650,000	\$8,199,000
Marquette Fish Hatchery	1994 Series I	2002 Series IIIIR	12/5/2002	\$235,000	\$2,300,000

**Natural Resources Total** **\$22,300,000**

## SBA Bonded Projects

Natural Resources & Community Health	Bond Issue	Refunding Issue(s)	Lease End Date	Rental Payme	SBA Project Cost
DNR/DPH Joint Lab	1992 Series I	1998 Series I	12/17/1998	\$1,472,551	\$14,308,000
<b>Natural Resources &amp; Community Health Total</b>					<b>\$14,308,000</b>
<b>Other State Agencies Total</b>					<b>\$1,112,114,722</b>